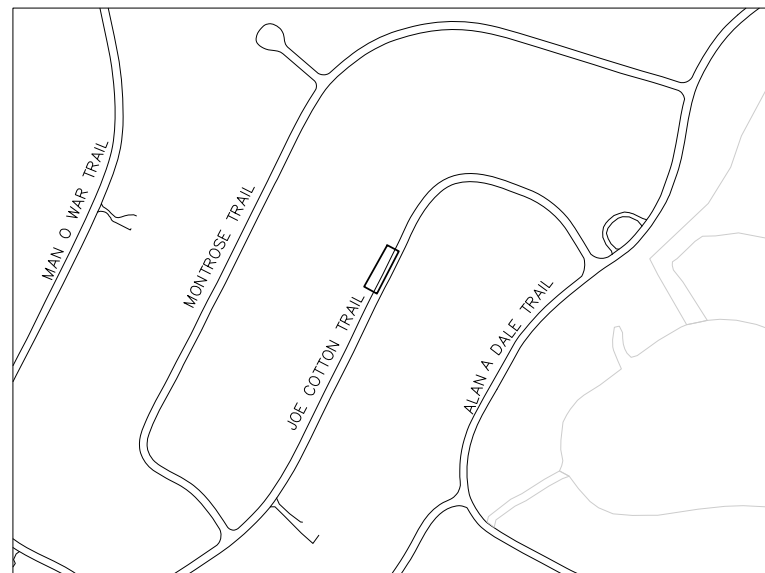




LEON COUNTY JOE COTTON TRAIL RETROFIT



LOCATION MAP
NTS

Prepared For:
ENGINEERING SERVICES DIVISION

Director of Public Works
TONY PARK, P.E.

Project Manager
FELTON B. ARD, P.E.

Board of County Commissioners

William C. Proctor, Jr.
District 1

Jane G. Sauls
District 2

John Dailey
District 3

Bryan Desloge
District 4

Bob Rackleff
District 5

Cliff Thael
At-Large

Akin Akinyemi
At-Large

DECEMBER 2009

CDM Camp Dresser & McKee Inc.
3522 Thomasville Road, Suite 300
Tallahassee, FL 32309
Phone: 850-386-9500
FL COA No. EB-000020

Project No. 6021 71596

GOVERNING SPECIFICATIONS: STATE OF FLORIDA, DEPARTMENT OF TRANSPORTATION, STANDARD SPECIFICATIONS, LATEST EDITION AND SUPPLEMENTS THERETO IF NOTED IN THE SPECIAL TECHNICAL PROVISIONS FOR THIS PROJECT.

ATTENTION IS DIRECTED TO THE FACT THAT THESE PLANS MAY HAVE BEEN CHANGED IN SIZE BY REPRODUCTION. THIS MUST BE CONSIDERED WHEN OBTAINING SCALED DATA.

THESE PLANS HAVE BEEN PREPARED IN ACCORDANCE WITH AND ARE GOVERNED BY THE STATE OF FLORIDA DEPARTMENT OF TRANSPORTATION DESIGN STANDARDS (LATEST EDITION)

REGISTERED ENGINEER
STATE OF FLORIDA

BRIAN K. WILLIAMS, P.E.

CIVIL
NO. 64086

ISSUED FOR BID

consulting
engineering
construction
operations



Xref's: [C22X34, C22X34, MAP,] Images: []
 Filename: \\Orisvr1\WRDS\6021\71596\90P\General\G001INDSQ.dwg Last saved by: BUCKLANDU Time: 11/5/2009 2:38:36 PM

SUMMARY OF PAY ITEMS				
ITEM NUMBER	DESCRIPTION	UNITS	QUANTITY TOTAL	
			PLAN	FINAL
101-1	Mobilization	LS	1	
102-1	Maintenance of Traffic	LS	1	
104-10-2	Synthetic Bales	LF	20	
104-13-1	Staked Silt Fence (Type III)	LF	400	
110-1-1	Clearing & Grubbing	LS	1	
120-1	Excavation Regular	CY	50	
286-1	Turnout Construction	SY	37	
425-1-559	Inlets, Ditch Bottom, Type E Modified, w/ Slots	EA	2	
430-175-101	24" Reinforced Concrete Pipe (Class III)	LF	80	
522-2	Sidewalk Concrete, 6" Thick Fibermesh Concrete	SY	37	
570-1-1	Performance Turf (Temporary Seeding)	SY	200	
570-1-2	Performance Turf (Centipede Sod)	SY	400	

SHEET NO.	TITLE
GENERAL	
	COVER
G-1	INDEX OF SHEETS AND SUMMARY OF QUANTITIES
G-2	GENERAL NOTES, LEGEND AND ABBREVIATIONS
G-3	MAINTENANCE OF TRAFFIC PLAN
1 OF 3	TOPOGRAPHIC SURVEY
2 OF 3	TOPOGRAPHIC SURVEY
3 OF 3	TOPOGRAPHIC SURVEY
CIVIL	
C-1	SEDIMENT AND EROSION CONTROL PLAN
C-2	PLAN AND PROFILE
C-3	PLAN AND PROFILE
CIVIL DETAILS	
CD-1	MISCELLANEOUS DETAILS
CD-2	MISCELLANEOUS DETAILS

REV. NO.	DATE	DRWN	CHKD	REMARKS

DESIGNED BY: K. BRELAND
 DRAWN BY: D. BUCKLAND
 SHEET CHK'D BY: B. WILLIAMS
 CROSS CHK'D BY: J. WITTIG
 APPROVED BY: B. WILLIAMS
 DATE: DECEMBER 2009

CDM
 Camp Dresser & McKee Inc.
 3522 Thomasville Road, Suite 300
 Tallahassee, FL 32309
 Tel: (850) 388-9600
 FL CCA No. EB-0000020
 consulting • engineering • construction • operations

LEON COUNTY
 FLORIDA
JOE COTTON TRAIL RETROFIT

**INDEX OF SHEETS
 AND
 SUMMARY OF QUANTITIES**

DATE:
 BRIAN K. WILLIAMS
 P.E. NO. 64086

PROJECT NO. 6021-71596
 FILE NAME: G001INDSQ

SHEET NO.
G-1

GENERAL NOTES

- ALL ELEVATIONS ARE REFERRED TO NORTH AMERICAN VERTICAL DATUM OF 1988 (NAVD88).
- LOCATIONS, ELEVATIONS, AND DIMENSIONS OF EXISTING UTILITIES, STRUCTURES, AND OTHER FEATURES ARE SHOWN ACCORDING TO THE BEST INFORMATION AVAILABLE AT THE TIME OF PREPARATION OF THESE PLANS. BUT DO NOT PURPORT TO BE ABSOLUTELY CORRECT. PRIOR TO CONSTRUCTION, THE CONTRACTOR SHALL VERIFY AND AGREE TO BE FULLY RESPONSIBLE FOR ANY AND ALL DAMAGES WHICH MIGHT BE OCCASIONED BY HIS FAILURE TO EXACTLY LOCATE AND PRESERVE ANY AND ALL EXISTING UTILITIES, STRUCTURES, AND OTHER FEATURES AFFECTING HIS WORK.
- CONTRACTOR SHALL VERIFY ALL UTILITIES AND NOTIFY THE AFFECTED UTILITIES 72 HOURS PRIOR TO DIGGING IN ANY PORTION OF THE SITE.
- THE CONTRACTOR SHALL REPLACE ANY MONUMENTS, FENCES, ETC. WITH THE SAME TYPE OF MATERIAL THAT WAS REMOVED DURING CONSTRUCTION.
- TOPOGRAPHIC SURVEY WAS PERFORMED BY: DIVERSIFIED DESIGN & DRAFTING SERVICES, INC. JASON D. HILL 2374 CAPITAL CIRCLE N.E. TALLAHASSEE, FLORIDA 32308 PHONE: 850-385-1133 FAX: 850-385-1236
- THE CONTRACTOR SHALL CONTACT THE ENGINEER'S OFFICE IMMEDIATELY UPON FINDING ANY CONFLICTS DURING CONSTRUCTION ON ANY IMPROVEMENTS SHOWN ON THE DRAWINGS.
- EROSION CONTROL AND SEDIMENTATION CONTROL DEVICES SHALL BE IN PLACE PRIOR TO BEGINNING OF ANY CLEARING, GRUBBING, DEMOLITION OR CONSTRUCTION. THEY SHALL BE INSTALLED TO THE LIMITS SHOWN IN THE DRAWING, AS REQUIRED IN THE SPECIFICATIONS AND IN ACCORDANCE WITH ALL REGULATORY AGENCY REQUIREMENTS (SEE EROSION CONTROL NOTES)
- ALL CONCRETE FINISHING SHALL CONFORM TO F.D.O.T. SPECIFICATION SECTION 400-15 (FINISHING CONCRETE) OR AS APPROVED BY THE ENGINEER.
- ALL STATIONING AND OFFSET REFERS TO CONSTRUCTION BASELINE UNLESS OTHERWISE NOTED ON PLANS. OFFSETS REFER TO THE CENTERLINE OF THE STRUCTURE.
- EXISTING UTILITIES AND FACILITIES SHOWN ON THE DRAWINGS WERE LOCATED FROM THE UTILITY OWNER'S RECORDS OF UNDERGROUND FACILITIES. GUARANTEE IS NOT MADE THAT ALL EXISTING FACILITIES ARE SHOWN NOR THAT THOSE FACILITIES SHOWN ARE ENTIRELY ACCURATE. THE CONTRACTOR SHALL BE RESPONSIBLE FOR THE COORDINATION/RELOCATION OF THE EXISTING UTILITIES.
- THE CONTRACTOR SHALL, BY REPAIR OR REPLACE, RETURN TO EQUAL OR BETTER CONDITION ALL PAVEMENT, SIDEWALK, LAWNS, UTILITIES AND OTHER ITEMS DAMAGED BY THIS CONSTRUCTION ACTIVITY.
- DURING CONSTRUCTION OF THE IMPROVEMENTS, THE CONTRACTOR IS RESPONSIBLE FOR PROTECTION, PROTECTION, AND REPLACEMENT OF ITEMS ON PRIVATE PROPERTY AND PUBLIC RIGHTS OF WAY SUCH AS SPRINKLERS, FENCES, SOD, SHRUBS, TREES, SURVEYING MARKERS, ETC.
- PRIOR TO EXCAVATING, THE CONTRACTOR SHALL NOTIFY THE EXISTING UTILITIES COMPANIES OWNERS IN ACCORDANCE WITH THE REQUIREMENTS OF FLORIDA STATUTES, PROTECTION OF UNDERGROUND PIPELINES F.S. 553.851, CH 17-143.
- ALL CONSTRUCTION SHALL CONFORM TO THE FLORIDA DEPARTMENT OF TRANSPORTATION STANDARD SPECIFICATIONS FOR ROAD AND BRIDGE CONSTRUCTION, MOST RECENT EDITIONS.
- THE CONTRACTOR SHALL BE RESPONSIBLE FOR THE LOCATION AND PROTECTION OF ALL UTILITIES THAT MAY EXIST, ABOVE OR BELOW GROUND.
- ALL BRUSH, STRIPPINGS OR UNSUITABLE MATERIAL SHALL BE DISPOSED OF OFF-SITE AT THE CONTRACTOR'S EXPENSE.
- MEASURES SHALL BE TAKEN BY THE CONTRACTOR TO ENSURE THAT ADEQUATE EROSION AND SEDIMENT CONTROL ARE MAINTAINED AT ALL TIMES DURING THE PROJECT (SEE EROSION CONTROL NOTES).
- ALL PRIVATE AND PUBLIC PROPERTY AFFECTED BY THIS WORK SHALL BE RESTORED TO A CONDITION EQUAL TO OR BETTER THAN THE CONDITION EXISTING PRIOR TO COMMENCING CONSTRUCTION UNLESS SPECIFICALLY EXEMPTED BY THE PLANS. COSTS TO BE INCIDENTAL TO OTHER CONSTRUCTION AND NO EXTRA COMPENSATION TO BE ALLOWED.
- INSTALLATION OF ALL STORM SEWERS, INLETS, MANHOLES, BOX CULVERTS AND APPURTENANCES SHALL BE IN ACCORDANCE WITH THE REQUIREMENTS OF THE APPLICABLE SECTIONS OF FLORIDA DEPARTMENT OF TRANSPORTATION STANDARD SPECIFICATIONS, OR AS INDICATED ON THE DRAWINGS.
- THE LIMITS OF CONSTRUCTION SHOWN ON THE PLANS SHALL BE STRICTLY OBSERVED BY THE CONTRACTOR. ALL INGRESS, EGRESS AND TRAFFIC PATTERNS ON THE SITE SHALL BE WITHIN THE LIMITS OF CONSTRUCTION SHOWN ON THE DRAWINGS.
- STATION OFFSETS SHOWN ON PLANS ARE FROM CENTERLINE TO CENTERLINE OF STRUCTURE.
- WATER AND SEWER CROSSING(S):
 - WHERE WATER MAINS MUST PASS OVER STORM, SANITARY AND/OR EFFLUENT REUSE LINES AND A MINIMUM CLEARANCE OF 18" CANNOT BE MAINTAINED, THE WATER MAIN SHALL BE CONSTRUCTED OF MECHANICAL JOINT DUCTILE IRON PIPE 10' EQUIDISTANT EACH SIDE OF THE CROSSING AND PROVIDE A 6" MINIMUM CLEARANCE BETWEEN THE WATER MAIN AND THE OTHER UTILITY.
 - A HORIZONTAL SEPARATION OF 10' MUST BE MAINTAINED BETWEEN POTABLE WATER LINES AND NON-POTABLE LINES. WHEN THIS IS NOT POSSIBLE, REPLACE PVC WITH MECHANICAL JOINT DUCTILE IRON PIPE AND LAY IN SEPARATE TRENCH. IN CASE OF RESTRICTED ACCESS REUSE WATER, A 5" MINIMUM HORIZONTAL SEPARATION IS ACCEPTABLE.
- SITE PREPARATION:
 - REMEDIAL DEWATERING MAY BE NEEDED PRIOR TO ANY EARTHWORK OPERATIONS.
 - THE CONTRACTOR SHALL SUBMIT ANY MODIFICATIONS TO THE MAINTENANCE OF TRAFFIC FOR APPROVAL BY LEON COUNTY BEFORE CONSTRUCTION BEGINS.
 - EXISTING TRAFFIC CONTROL SIGNS SHALL BE MAINTAINED OPERATIONAL AT ALL TIMES.

EROSION CONTROL

IT IS THE CONTRACTORS RESPONSIBILITY TO IMPLEMENT THE EROSION AND TURBIDITY CONTROLS AS SHOWN ON THE EROSION AND TURBIDITY CONTROL PLAN. IT IS ALSO THE CONTRACTORS RESPONSIBILITY TO ENSURE THESE CONTROLS ARE PROPERLY INSTALLED, MAINTAINED AND FUNCTIONING PROPERLY TO PREVENT TURBID OR POLLUTED WATER FROM LEAVING THE PROJECT SITE. THE CONTRACTOR WILL ADJUST THE EROSION AND TURBIDITY CONTROLS SHOWN ON THE EROSION AND TURBIDITY CONTROL PLAN AND ADD ADDITIONAL CONTROL MEASURES, AS REQUIRED, TO ENSURE THE SITE MEETS ALL FEDERAL, STATE AND LOCAL EROSION AND TURBIDITY CONTROL REQUIREMENTS. THE FOLLOWING BEST PRACTICES WILL BE IMPLEMENTED BY THE CONTRACTOR AS REQUIRED BY THE EROSION AND TURBIDITY CONTROL PLAN AND AS REQUIRED SITE BY THE REGULATORY AGENCIES.

- SEDIMENT BASINS AND TRAPS, PERIMETER DITCHES, SEDIMENT BARRIERS AND OTHER MEASURES INTENDED TO TRAP SEDIMENT SHALL BE CONSTRUCTED AS A FIRST STEP BEFORE ANY LAND-DISTURBING TAKES PLACE TO MEET THE EROSION AND TURBIDITY REQUIREMENTS IMPOSED ON THE PROJECT.
- ALL SEDIMENT CONTROL MEASURES ARE TO BE ADJUSTED TO MEET FIELD CONDITIONS AT THE TIME OF CONSTRUCTION AND BE CONSTRUCTED PRIOR TO ANY GRADING OR DISTURBANCE OF EXISTING SURFACE MATERIAL ON BALANCE OF SITE. PERIMETER SEDIMENT BARRIERS SHALL BE CONSTRUCTED TO PREVENT SEDIMENT OR TRASH FROM FLOWING OR FLOATING ON TO ADJACENT PROPERTIES.
- DURING CONSTRUCTION OF THE PROJECT, SOIL STOCK PILES SHALL BE STABILIZED OR PROTECTED WITH SEDIMENT TRAPPING MEASURES. THE CONTRACTOR IS RESPONSIBLE FOR THE TEMPORARY PROTECTIONS AND PERMANENT STABILIZATION OF ALL SOIL STOCKPILES ON SITE AS WELL AS SOIL INTENTIONALLY TRANSPORTED FROM THE PROJECT SITE.
- AFTER ANY SIGNIFICANT RAINFALL SEDIMENT CONTROL STRUCTURES WILL BE INSPECTED FOR INTEGRITY. ANY DAMAGED DEVICES SHALL BE REPAIRED IMMEDIATELY.
- CONCENTRATED RUNOFF SHALL NOT FLOW DOWN CUT OR FILL SLOPES UNLESS CONTAINED WITHIN AN ADEQUATE TEMPORARY OR PERMANENT CHANNEL, FLUME OR SLOPE DRAIN STRUCTURE.
- WHENEVER WATER SEEPS FROM A SLOPE FACE ADEQUATE DRAINAGE OR OTHER PROTECTION SHALL BE PROVIDED.
- SEDIMENT WILL BE PREVENTED FROM ENTERING ANY STORM DRAIN SYSTEM, DITCH, OR CHANNEL. ALL STORM SEWER INLETS THAT ARE MADE OPERABLE DURING CONSTRUCTION SHALL BE PROTECTED SO THAT SEDIMENT-LOADED WATER CANNOT ENTER THE CONVEYANCE SYSTEM WITHOUT FIRST BEING FILTERED OR OTHERWISE TREATED TO REMOVE SEDIMENT. GRATE INLETS AND CURB INLETS SHALL BE PROTECTED WITH GRATE INLET PROTECTION POD-1000 AND CURB INLET PROTECTION PRODUCED BY SUNTREE ISLES, INC., OR APPROVED EQUAL.
- BEFORE TEMPORARY OR NEWLY CONSTRUCTED STORMWATER CONVEYANCE CHANNELS ARE MADE OPERATIONAL ADEQUATE OUTLET PROTECTION AND ANY REQUIRED TEMPORARY OR PERMANENT CHANNEL LINING SHALL BE INSTALLED IN BOTH THE CONVEYANCE CHANNEL AND RECEIVING CHANNEL.
- WHEN WORK IN A LIVE WATERCOURSE IS PERFORMED, PRECAUTIONS SHALL BE TAKEN TO MINIMIZE ENRICHMENT, CONTROL SEDIMENT TRANSPORT AND STABILIZE THE WORK AREA TO THE GREATEST EXTENT POSSIBLE DURING CONSTRUCTION. NONERODIBLE MATERIAL SHALL BE USED FOR THE CONSTRUCTION OF CAUSEWAYS AND COFFERDAMS. EARTHEN FILL MAY BE USED FOR THESE STRUCTURES IF ARMORED BY NONERODIBLE COVER MATERIALS.
- STOCKPILING MATERIAL: NO EXCAVATED MATERIAL SHALL BE STOCKPILED IN SUCH A MANNER AS TO DIRECT RUNOFF DIRECTLY OFF THE PROJECT SITE INTO ANY ADJACENT WATER BODY OR STORM WATER COLLECTION FACILITY.
- EXPOSED AREA LIMITATION: THE SURFACE AREA OF OPEN, RAW ERODIBLE SOIL EXPOSURE BY CLEARING AND GRUBBING OPERATIONS OR EXCAVATION AND FILLING OPERATIONS SHALL NOT EXCEED 1 ACRE. IF THE TOTAL AREA TO BE CLEARED IS EQUAL TO, OR EXCEEDS ONE (1) ACRE, THEN THE CONTRACTOR WILL BE RESPONSIBLE FOR PREPARING A STORMWATER POLLUTION PREVENTION PLAN (SWPPP) IN ACCORDANCE WITH EPA'S NPDES REGULATIONS. THE CONTRACTOR WILL BE RESPONSIBLE FOR SUBMITTING FDEP'S NOTICE ON INTENT (NOI) TO EPA FORTY-EIGHT (48) HOURS PRIOR TO COMMENCING CONSTRUCTION.
- TEMPORARY SEEDING: AREAS OPENED BY CONSTRUCTION OPERATIONS AND THAT ARE NOT ANTICIPATED TO BE RE-EXCAVATED OR DRESSED AND RECEIVE FINAL GRASSING TREATMENT WITHIN 30 DAYS SHALL BE SEEDED WITH A QUICK GROWING GRASS SPECIES WHICH WILL PROVIDE AN EARLY COVER DURING THE SEASON IN WHICH IT IS PLANTED AND WILL NOT LATER COMPETE WITH THE PERMANENT GRASSING.
- TEMPORARY SEEDING AND MULCHING: SLOPES STEEPER THAN 6:1 THAT FALL WITHIN THE CATEGORY ESTABLISHED IN PARAGRAPH 12 ABOVE, A SUFFICIENT AMOUNT OF MULCH MATERIAL SHALL BE CUT INTO THE SOIL OF THE SEEDED AREA ADEQUATE TO PREVENT MOVEMENT OF SEED AND MULCH.
- TEMPORARY GRASSING: THE SEEDED OR SEEDED AND MULCHED AREA(S) SHALL BE ROLLED AND WATERED OR HYDROMULCHED OR OTHER SUITABLE METHODS IF REQUIRED TO ASSURE OPTIMUM GROWING CONDITIONS FOR THE ESTABLISHMENT OF A GOOD GRASS COVER. TEMPORARY GRASSING SHALL BE THE SAME MIX & AMOUNT REQUIRED FOR PERMANENT GRASSING IN THE CONTRACT SPECIFICATIONS.
- TEMPORARY REGRASSING: IF, AFTER 14 DAYS FROM SEEDING, THE TEMPORARY GRASSED AREAS HAVE NOT ATTAINED A MINIMUM OF 75 PERCENT GOOD GRASS COVER, THE AREA WILL BE REWORKED AND ADDITIONAL SEED APPLIED SUFFICIENT TO ESTABLISH THE DESIRED VEGETATIVE COVER.
- MAINTENANCE: ALL FEATURES OF THE PROJECT DESIGNED AND CONSTRUCTED TO PREVENT EROSION AND SEDIMENT SHALL BE MAINTAINED DURING THE LIFE OF THE CONSTRUCTION SO AS TO FUNCTION AS THEY WERE ORIGINALLY DESIGNED AND CONSTRUCTED.

- PERMANENT EROSION CONTROL: THE EROSION CONTROL FACILITIES OF THE PROJECT SHOULD BE DESIGNED TO MINIMIZE THE IMPACT ON THE OFFSITE FACILITIES.
- SOD (CENTIPEDE) IS TO BE PLACED ON THE SIDE SLOPES AND BOTTOMS OF ALL NON-PAVED DITCHES AND ON ALL UPLAND SLOPES GREATER THAN 3:1.
- SEE ADDITIONAL EROSION AND SEDIMENT CONTROL NOTES ON SHEET G-3.
- DEWATERING MAY BE REQUIRED FOR CONSTRUCTION, ANY PERMITTING ASSOCIATED WITH THE DEWATERING OPERATION SHALL BE OBTAINED BY THE CONTRACTOR.
- PUMPED WATER FROM THE CONSTRUCTION SITE SHALL NOT BE DIRECTLY DISCHARGED INTO THE LAKE. ATTEMPT TO DISCHARGE PUMPED WATER ONTO A VEGETATED AREA SUCH THAT IT THEN SHEET FLOWS INTO THE LAKE. IF THAT IS NOT POSSIBLE, DISCHARGE ON THE UPSTREAM SIDE OF THE FLOATING TURBIDITY BARRIERS.

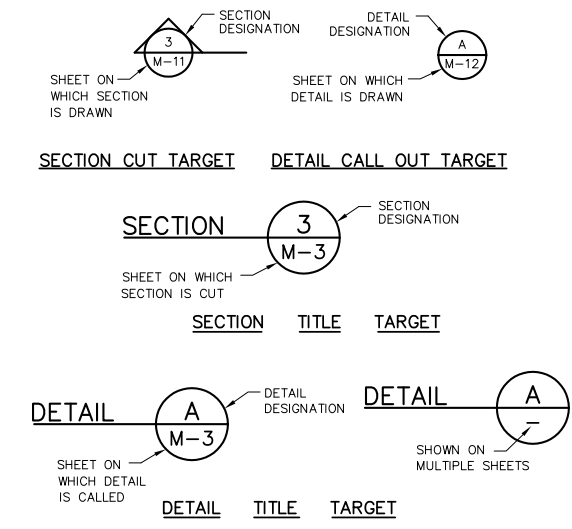
STORMWATER MANAGEMENT CONTROL OFFICER
 FELTON B. ARD, P.E.
 DEPARTMENT OF PUBLIC WORKS
 ENVIRONMENTAL SERVICES DIVISION
 2280 MICCOSUKEE ROAD
 TALLAHASSEE, FL 32308
 PHONE: 850-488-8003

UTILITY OWNERS & CONTACTS

- THE CONTRACTOR SHALL NOTIFY THE APPROPRIATE UTILITY COMPANY SEVENTY-TWO (72) HOURS IN ADVANCE OF ANY EXCAVATION INVOLVING ITS UTILITIES SO THAT A COMPANY REPRESENTATIVE CAN BE PRESENT. THE LOCATION OF THE UTILITIES SHOWN IN THE PLANS ARE APPROXIMATE ONLY. THE EXACT LOCATION SHALL BE DETERMINED BY THE CONTRACTOR DURING CONSTRUCTION.

UTILITY OWNERS:	COMMUNICATIONS	WATER & SEWER	ELECTRIC
GAS CITY OF TALLAHASSEE 300 SOUTH ADAMS STREET TALLAHASSEE, FL 32301 Mr. STEPHEN MAYFIELD PHONE: 850-891-5118	SPRINT COMMUNICATIONS 1325 BLAIR STONE ROAD P.O. BOX 2214 TALLAHASSEE, FL 32316-2214 Mr. ALLEN ATEN PHONE: 850-599-1857	CITY OF TALLAHASSEE 300 SOUTH ADAMS STREET B-26 TALLAHASSEE, FL 32301 Mr. TOMMY CRADY PHONE: 850-891-6182	CITY OF TALLAHASSEE 2602 JACKSON BLUFF ROAD TALLAHASSEE, FL 32304 Mr. RAY MITCHELL PHONE: 850-891-5001
- THE CONTRACTOR SHALL BE RESPONSIBLE TO VERIFY IF OTHER UTILITIES (NOT SHOWN IN THE PLANS) EXIST WITHIN THE AREA OF CONSTRUCTION. SHOULD THERE BE OTHER UTILITIES, THE CONTRACTOR SHALL NOTIFY THE APPROPRIATE UTILITY OWNERS TO RESOLVE UTILITY CONFLICTS AND UTILITY ADJUSTMENTS, AS REQUIRED. THE CONTRACTOR IS RESPONSIBLE FOR PROTECTION OF ALL UTILITIES TO REMAIN IN PLACE.
- UTILITIES ARE TO BE ADJUSTED OR RELOCATED BY THE UTILITY COMPANIES UNLESS OTHERWISE NOTED.

SECTION AND DETAIL NUMBERING SYSTEM



LEGEND

- STORM SEWER
- EXISTING SANITARY SEWER W/ MANHOLE
- EXISTING FIBER OPTIC
- EXISTING FORCE MAIN
- EXISTING BURIED TELEPHONE
- EXISTING POWER DUCTS OR CABLES
- OVERHEAD ELECTRIC
- EXISTING CABLE TELEVISION
- EXISTING STORM SEWER W/CATCH BASIN
- FIRE HYDRANT
- EXISTING POWER POLE
- EXISTING LIGHT POLE
- R/W - RIGHT OF WAY
- PROPERTY LINE
- JURISDICTIONAL BOUNDARY
- LIMITS OF CONSTRUCTION
- EASEMENTS
- WATER ELEVATION
- BASE LINE
- PROPOSED SILT FENCE
- STORMSEWER TO BE CONST. UNDER EXISTING UTILITY
- STORMSEWER TO BE CONST. OVER EXISTING UTILITY
- BENCH MARK
- EXISTING CHAIN LINK FENCE
- NEW CHAIN LINK FENCE
- EXISTING CONTOUR
- PROPOSED CONTOUR
- EXISTING SPOT ELEVATION
- PROPOSED SPOT ELEVATION
- DRAINAGE STRUCTURE ID
- DITCH BOTTOM INLET
- STORMWATER MANHOLE
- PAVEMENT RESTORATION

ABBREVIATIONS

ABBREVIATION	ABBREVIATION	ABBREVIATION	ABBREVIATION
ADJUSTABLE	ADJ	NOT TO SCALE	NTS
AHEAD OF STATION	AH	NUMBER	NO
ALUMINUM	AL, ALUM	ON CENTER	OC
ANGLE	<	OPPOSITE	OPP
BACK OF STATION	BK	OPTION	OPT
BALL VALVE	BAV	OPENING	OPNG
BASILINE OF SURVEY	ℓ	OR EQUAL	O/E
BELOW	BEL	PAVEMENT	PVMT, PAVT
BENCHMARK	BM	PERFORATED	PERF
BETWEEN	BTWN	POINT OF CURVATURE	POC
BITUMINOUS COATED CORRUGATED METAL PIPE	BCCMP	POINT OF TANGENCY	POT
BURIED TELEPHONE	BT	POINT	PT
CENTER LINE OF CONSTRUCTION	ℓ	POLYETHYLENE PIPE	PP
CENTER TO CENTER	CC	POLYVINYL CHLORIDE	PVC
CONCRETE	CONC	POUND(S)	LB(S)
CONCRETE BOX CULVERT	CBC	PLATE	PL
CONSTRUCT	CONST	PRECAST	PRCST
CORRUGATED METAL PIPE	CMP	PROFILE GRADE LINE	PGL
CENTER (ED)	CTR	RADIUS	RAD, R
CROSS SECTION	X-SEC	REINFORCED CONCRETE PIPE	RCP
DEMOLITION	DEMO	REQUIRED	REQ'D
DIAMETER	DIA, DIAM	RESTRAINED JOINT	RJ
DIAGONAL	DIAG	RIGHT	RT, R
DIMENSION	DIM	RIGHT OF WAY	R/W, ROW
D/S	D/S	SANITARY SEWER	SAN, S
DISCHARGE	DISCH	SECTION	SEC
DITCH BOTTOM INLET	DBI	SHEET	SH, SHT
DRAWING	DWG	SIDEWALK	SDWK, S/W
DUCTILE IRON PIPE	DIP	SLIP-ON JOINT	SU
DUCTILE IRON	DI	SQUARE FEET	SQ. FT., SF
EACH	EA	STAINLESS STEEL	SS
ELEVATION	EL, ELEV	STANDARD	STD
EDGE OF PAVEMENT	EOP, EP	STATION	STA
EXISTING	EXIST	STEEL	STL
FIBERGLASS REINFORCED PIPE	FRP	STEEL PIPE	SP
FINISH	FIN	STORM SEWER	SS, STORM
FLANGE	FLG	SYMMETRICAL	SYMM
FLARED END SECTION	FES	TANGENT TO CURVE	TC
FLOOR	FL	TEMPORARY CONSTRUCTION EASEMENT	TCE
FURNISHED BY OTHERS	FBO	THICK	THK
FEET/FOOT	FT	TIED JOINT	TJ
GALVANIZED STEEL PIPE	GSP	TOP OF CURB	TOC
HEIGHT	HT	TYPICAL	TYP
HIGH POINT	HP	TEMPORARY	TMP
INSTALL	INST	UPSTREAM	U/S
LEFT	L, LT	UTILITY EASEMENT	UE
LOW POINT	LP	VERIFIED VERTICAL ELEVATION AND HORIZONTAL LOCATION	Vv, VVH
MATERIAL	MTL	VERTICAL	VERT
MANHOLE	MH	VERTICAL CURVE	VC
MAXIMUM	MAX	WATER	WTR
MECHANICAL	MECH	WATER LEVEL	WL
METAL	MET	WATER MAIN	WM
MINIMUM	MIN	WEATHERPROOF	WPF
MITERED END SECTION	MES	WEST	W
MOUNTED	MTD	WITH	W/
NOMINAL	NOM		
NOT IN CONTRACT	NIC		

Xref's: [C:\22\3\4, MAP_] Images: [\\Orisv1\WRDS\6021\71596\90F\General\0002\notes.dwg Time: 12/10/2009 8:44:06 AM Last saved by: BUCKLANDJJ]

REV. NO.	DATE	DRWN	CHKD	REMARKS

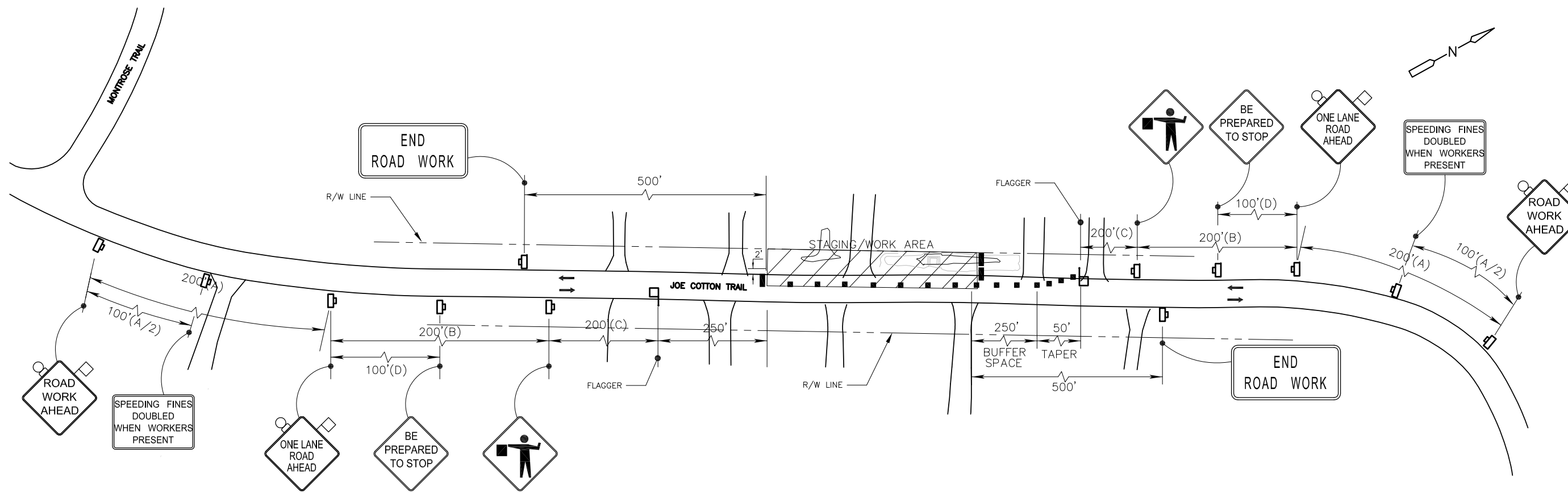
DESIGNED BY: K. BRELAND
 DRAWN BY: D. BUCKLAND
 SHEET CHK'D BY: B. WILLIAMS
 CROSS CHK'D BY: J. WITTE
 APPROVED BY: B. WILLIAMS
 DATE: DECEMBER 2009

CDM
 Camp Dresser & McKee Inc.
 3522 Thomasville Road, Suite 300
 Tallahassee, FL 32309
 Tel: (850) 388-9690
 FL CCA No. EB-000020

LEON COUNTY
 FLORIDA
JOE COTTON TRAIL RETROFIT

GENERAL NOTES, LEGEND AND ABBREVIATIONS

DATE: BRIAN K. WILLIAMS
 P.E. NO. 64086
 PROJECT NO. 6021-71596
 FILE NAME: 0002NOTES
 SHEET NO. **G-2**



MAINTENANCE OF TRAFFIC NOTES:

- ANY MODIFICATIONS OF THIS MAINTENANCE OF TRAFFIC PLAN SHALL BE SUBMITTED TO LEON COUNTY, TRAFFIC ENGINEERING DIVISION FOR REVIEW AND APPROVAL SEVEN (7) DAYS PRIOR TO IMPLEMENTATION.
- PROJECT WORK HOURS ARE MONDAY - FRIDAY BETWEEN 7:00 AM TO 7:00 PM ON RESIDENTIAL STREETS, AND 9:00 AM TO 4:00 PM ON COLLECTOR OR ARTERIAL STREETS.
- CONTRACTOR MUST MAINTAIN EXISTING SIGNING. IF SIGNS ARE DAMAGED DUE TO HIS ACTIVITY, THE CONTRACTOR IS REQUIRED TO REPLACE THEM IN ACCORDANCE WITH CURRENT COUNTY OR FDOT STANDARD SPECIFICATIONS IMMEDIATELY.
- THIRTY FOOT RADII ARE REQUIRED AT ALL INTERSECTIONS WHERE THE ROADWAY IS REBUILT.
- ACCESS TO ALL STREETS AND DRIVEWAYS TO BE MAINTAINED AT ALL TIMES.
- THE CONTRACTOR SHALL CONFINE HIS ACTIVE WORK AREA TO NO MORE THAN 1000 FEET AT A TIME.
- THE ROADWAY SHALL BE RESTORED TO AT LEAST A LIMEROCK SURFACE BEFORE IT IS REOPENED TO TRAFFIC, AND BEFORE THE CONTRACTOR MOVES ON TO THE NEXT CONSTRUCTION ZONE.
- DUST CONTROL MEASURES SHALL BE IMPLEMENTED ON ALL UNPAVED SURFACES UNTIL PAVED.
- WARNING LIGHTS SHOULD BE USED TO MARK BARRICADES AT NIGHT AS NEEDED.
- STREET NAMES MAY BE USED WHEN DESIRABLE FOR DIRECTING DETOURED TRAFFIC.
- EXISTING TRAFFIC CONTROL SIGNS SHALL BE MAINTAINED OPERATIONAL AT ALL TIMES.
- TRAFFIC SHALL BE MAINTAINED ON PAVED SURFACES AT ALL TIMES.
- THE CONTRACTOR SHALL RETURN THE GROUND TO ITS ORIGINAL CONDITION OR PROPOSED FINAL GRADE, AS APPROPRIATE, WHEN REMOVING ANY TEMPORARY PAVEMENT.
- TRAFFIC CONDITIONS, ACCIDENTS AND OTHER EMERGENCY CONDITIONS MAY REQUIRE THE ENGINEER TO MODIFY ANY CHANNELIZATIONS SHOWN IN THESE PLANS. THE CONTRACTOR SHALL MAKE THE NECESSARY ADJUSTMENTS, AS DIRECTED BY THE ENGINEER, WITHOUT DELAY.
- TEMPORARY PAVEMENT SHALL CONSIST OF 6" LIMEROCK BASE WITH 1 1/2" TYPE S ASPHALTIC CONCRETE, OR AN EQUIVALENT SECTION APPROVED BY THE ENGINEER.
- ACCESS TO ALL BUSINESSES SHALL BE PROVIDED AT ALL TIMES.
- "T" STYLE SIGNS TO BE INSTALLED 7 DAYS PRIOR TO ROAD CLOSURE.
- ANY ROAD CROSSINGS SHALL BE CONDUCTED IN ONE DAY.
- TRAFFIC SHALL BE MAINTAINED IN ACCORDANCE WITH THESE TRAFFIC CONTROL PLANS AND THE 2008 FDOT DESIGN STANDARDS, INDEX 600 SERIES. THE USE OF ALL TRAFFIC CONTROL DEVICES SUCH AS BARRICADES, SIGNS, FLASHERS, ETC. SHALL MEET THE REQUIREMENTS OF THE 2007 FLORIDA DEPARTMENT OF TRANSPORTATION STANDARD SPECIFICATIONS FOR ROAD AND BRIDGE CONSTRUCTION.
- MAINTENANCE OF TRAFFIC SIGNING LOCATIONS ARE APPROXIMATE AND MAY BE VARIED AS DEEMED NECESSARY BY THE ENGINEER TO AVOID STREETS, DRIVEWAYS OR OTHER CONFLICTS. MINIMUM SIGNING DISTANCES SHALL BE MAINTAINED DURING CONSTRUCTION.
- ARROWS DENOTE DIRECTION OF TRAFFIC ONLY AND DO NOT REFLECT PAVEMENT MARKINGS.
- THE CONTRACTOR SHALL PROVIDE ANY TEMPORARY DRAINAGE MEASURES REQUIRED TO ADEQUATELY DRAIN THE PROJECT AND MAINTAIN HISTORICAL DRAINAGE PATTERNS.
- THE EXISTING REGULATORY SPEED LIMIT SHALL BE MAINTAINED UNLESS OTHERWISE INDICATED IN THE PLANS.
- NO DROP-OFF GREATER THAN 3 INCHES WILL BE ALLOWED TO REMAIN AT THE END OF ONE WORK PERIOD.
- A DISCUSSION OF LANE CLOSURE WILL BE MADE PART OF ALL PRE-CONSTRUCTION CONFERENCES. THE CONTRACTOR WILL BE REQUIRED TO SUBMIT A WRITTEN PLAN WHICH DETAILS EACH ACTIVITY INVOLVED IN THE LANE CLOSURE. THE PLAN SHALL INCLUDE BACK-UP PLANS FOR ACTIVITIES CRITICAL TO REOPENING THE LANES TO TRAFFIC. THE BACK-UP PLAN SHALL INCLUDE BACK-UP FOR ALL SUBCONTRACTOR OPERATIONS AS WELL AS THE PRIME CONTRACTOR'S.
- ALL OTHER SIGNS ARE TO BE CONSTRUCTED USING FDOT STANDARD INDEX NO. 603 FOR TRAFFIC CONTROL.
- THE CONTRACTOR MUST CONTACT LEON COUNTY EMERGENCY SERVICES TO NOTIFY THEM OF ANY TEMPORARY LANE CLOSURES OR OTHER ROADWAY CONSTRUCTION THAT COULD IMPACT ACCESS TO THIS AREA.

Speed (mph)	Spacing (ft.)			
	A	B	C	D
25 to 45	200	200	200	100

Speed (mph)	MAX. DISTANCE BETWEEN DEVICES (ft.)			
	Cones or Tubular Markers		Type I or Type II Barricades or Vertical Panels or Drums	
	Taper	Tangent	Taper	Tangent
25 to 45	20	50	20	50

LEGEND

- WORK AREA
- SIGN WITH 18" x 18" (MIN.) ORANGE FLAG AND TYPE B LIGHT
- TYPE I, TYPE II OR TYPE III BARRICADE OR VERTICAL PANEL OR DRUM
- CHANNELIZING DEVICE (SEE INDEX NO. 600)
- WORK ZONE SIGN
- FLAGGER
- LANE IDENTIFICATION + DIRECTION OF TRAFFIC

DESIGN SPEED = 35 MPH
 BUFFER SPACE = 250 FT.

Xref's: [C22X34, MAP, CEBASE,] Images: [] File name: G:\6021\71596\60P\General\G003MOTPL.dwg Last saved by: WILLIAMSB Time: 10/19/2009 3:03:48 PM

REV. NO.	DATE	DRWN	CHKD	REMARKS

DESIGNED BY: B. CHEVALIER
 DRAWN BY: D. BUCKLAND
 SHEET CHK'D BY: B. WILLIAMS
 CROSS CHK'D BY: J. WITTIG
 APPROVED BY: B. CHEVALIER
 DATE: DECEMBER 2009

CDM
 Camp Dresser & McKee Inc.
 3522 Thomasville Road, Suite 300
 Tallahassee, FL 32309
 Tel: (850) 388-9600
 FL CCA No. EB-0000020
 consulting • engineering • construction • operations

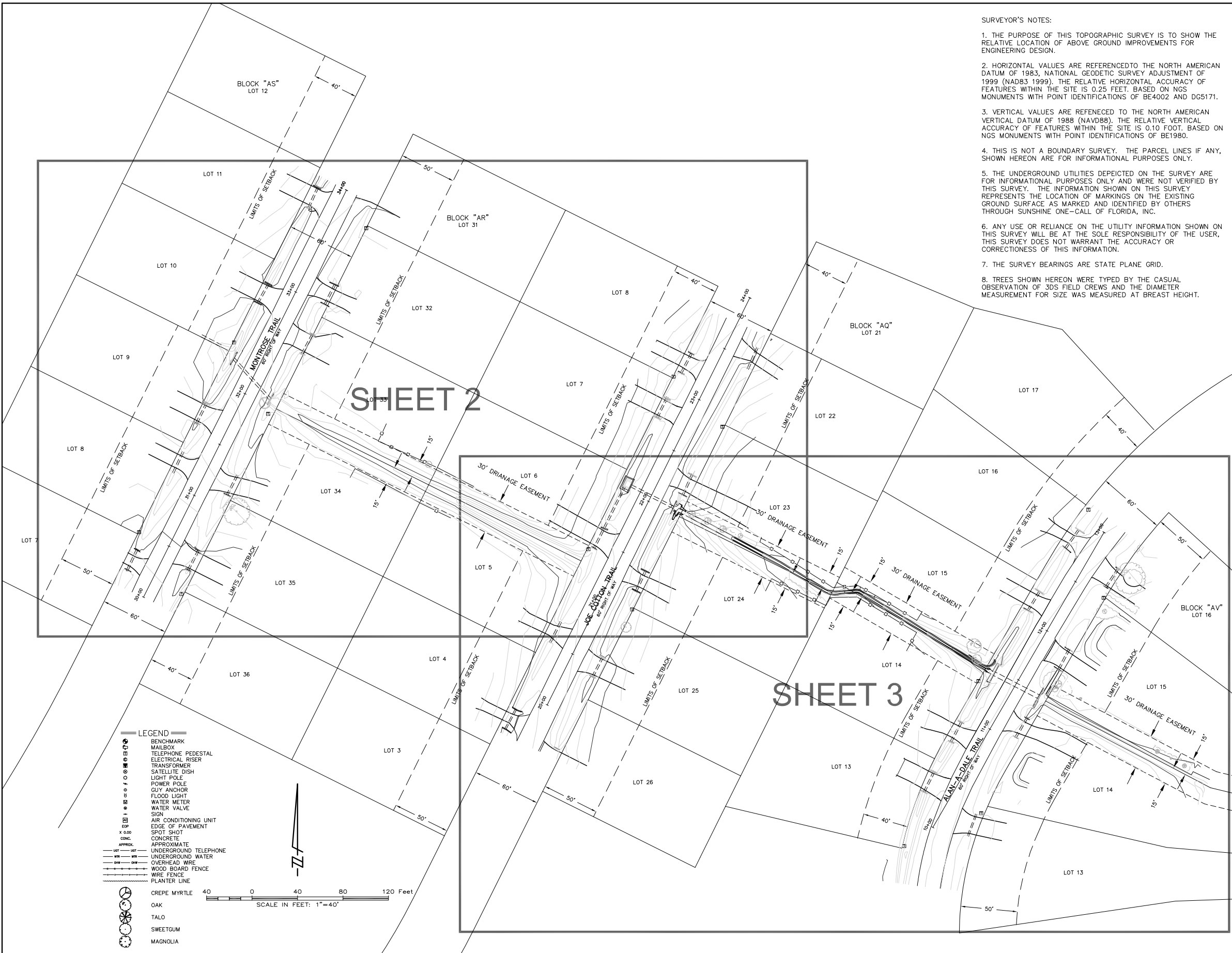
LEON COUNTY
 FLORIDA
JOE COTTON TRAIL RETROFIT

MAINTENANCE OF TRAFFIC PLAN

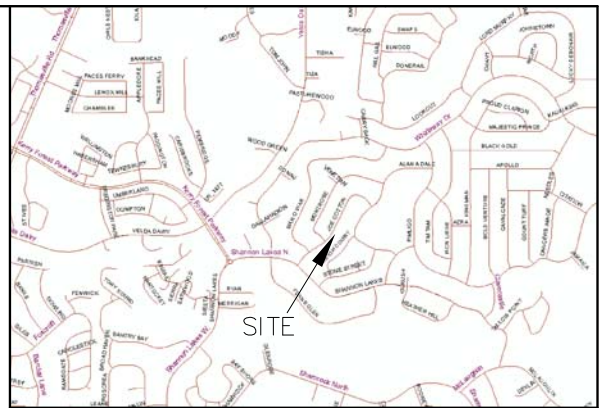
DATE:
 BRIAN K. WILLIAMS
 P.E. NO. 64086

PROJECT NO. 6021-71596
 FILE NAME: G003MOTPL

SHEET NO.
G-3



- SURVEYOR'S NOTES:**
1. THE PURPOSE OF THIS TOPOGRAPHIC SURVEY IS TO SHOW THE RELATIVE LOCATION OF ABOVE GROUND IMPROVEMENTS FOR ENGINEERING DESIGN.
 2. HORIZONTAL VALUES ARE REFERENCED TO THE NORTH AMERICAN DATUM OF 1983, NATIONAL GEODETIC SURVEY ADJUSTMENT OF 1999 (NAD83 1999). THE RELATIVE HORIZONTAL ACCURACY OF FEATURES WITHIN THE SITE IS 0.25 FEET. BASED ON NGS MONUMENTS WITH POINT IDENTIFICATIONS OF BE4002 AND DG5171.
 3. VERTICAL VALUES ARE REFERENCED TO THE NORTH AMERICAN VERTICAL DATUM OF 1988 (NAVD88). THE RELATIVE VERTICAL ACCURACY OF FEATURES WITHIN THE SITE IS 0.10 FOOT. BASED ON NGS MONUMENTS WITH POINT IDENTIFICATIONS OF BE1980.
 4. THIS IS NOT A BOUNDARY SURVEY. THE PARCEL LINES IF ANY, SHOWN HEREON ARE FOR INFORMATIONAL PURPOSES ONLY.
 5. THE UNDERGROUND UTILITIES DEPICTED ON THE SURVEY ARE FOR INFORMATIONAL PURPOSES ONLY AND WERE NOT VERIFIED BY THIS SURVEY. THE INFORMATION SHOWN ON THIS SURVEY REPRESENTS THE LOCATION OF MARKINGS ON THE EXISTING GROUND SURFACE AS MARKED AND IDENTIFIED BY OTHERS THROUGH SUNSHINE ONE-CALL OF FLORIDA, INC.
 6. ANY USE OR RELIANCE ON THE UTILITY INFORMATION SHOWN ON THIS SURVEY WILL BE AT THE SOLE RESPONSIBILITY OF THE USER. THIS SURVEY DOES NOT WARRANT THE ACCURACY OR CORRECTNESS OF THIS INFORMATION.
 7. THE SURVEY BEARINGS ARE STATE PLANE GRID.
 8. TREES SHOWN HEREON WERE TYPED BY THE CASUAL OBSERVATION OF 3DS FIELD CREWS AND THE DIAMETER MEASUREMENT FOR SIZE WAS MEASURED AT BREAST HEIGHT.



VICINITY MAP
NOT TO SCALE

SURVEYOR'S CERTIFICATION:

I HEREBY CERTIFY TO THE BEST OF MY KNOWLEDGE AND BELIEF THAT THE SURVEY SHOWN HEREON WAS PREPARED IN ACCORDANCE WITH THE "MINIMUM TECHNICAL STANDARDS" FOR SURVEYING AND MAPPING IN THE STATE OF FLORIDA AS SET FORTH BY THE FLORIDA BOARD OF PROFESSIONAL SURVEYORS AND MAPPERS IN CHAPTER 61G17-6, FLORIDA ADMINISTRATIVE CODE, PURSUANT TO SECTION 472.027, FLORIDA STATUTES.

DATE OF SIGNATURE _____ JASON D. HILL, P.S.M.
FLORIDA SURVEYOR AND MAPPER
REGISTRATION No.6008

NOT VALID WITHOUT THE SIGNATURE AND THE ORIGINAL RAISED SEAL OF A FLORIDA LICENSED SURVEYOR AND MAPPER.

DIVERSIFIED DESIGN & DRAFTING SERVICES, INC.
FLORIDA CERTIFICATE OF AUTHORIZATION NUMBER 6844
(LB 6844 = LICENSED BUSINESS NUMBER 6844)

LEGEND

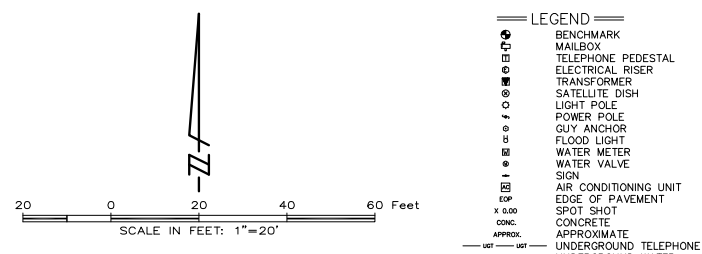
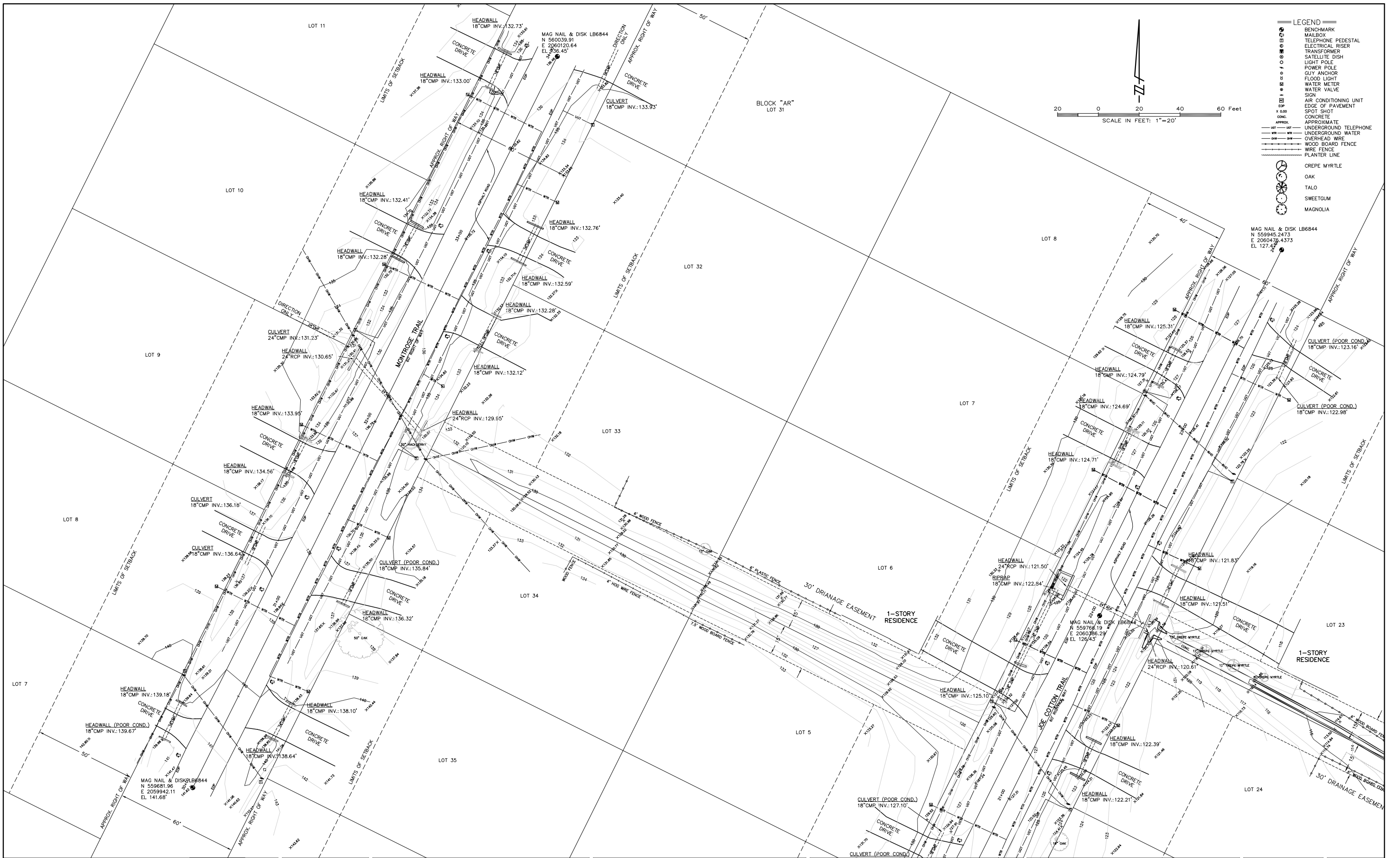
- BENCHMARK
- MAILBOX
- TELEPHONE PEDESTAL
- ELECTRICAL RISER
- TRANSFORMER
- SATELLITE DISH
- LIGHT POLE
- POWER POLE
- GUY ANCHOR
- FLOOD LIGHT
- WATER METER
- WATER VALVE
- SIGN
- AIR CONDITIONING UNIT
- EDGE OF PAVEMENT
- SPOT SHOT
- CONC.
- APPROXIMATE
- UNDERGROUND TELEPHONE
- UNDERGROUND WATER
- OVERHEAD WIRE
- WOOD BOARD FENCE
- WIRE FENCE
- PLANTER LINE
- CREPE MYRTLE
- OAK
- TALO
- SWEETGUM
- MAGNOLIA

SCALE IN FEET: 1"=40'

0 40 80 120 Feet

NOT A BOUNDARY SURVEY

<p>TALLAHASSEE • PENSACOLA</p>	<p>DIVERSIFIED DESIGN AND DRAFTING SERVICES, INC. LB #6844</p> <p>2374 CAPITAL CIRCLE N.E. TALLAHASSEE, FLORIDA 32308 PH: 850-385-1133 FAX: 850-385-1236</p>	<p>DRAWN BY: ELS</p> <p>CHECKED BY: JDH</p> <p>DATE: 6/17/09</p> <p>SCALE: 1"=40'</p> <p>PROJECT NO: 256.000</p> <p>DIGITAL FILE: 256_SHEET1</p> <p>STATUS: FINAL</p> <p>FIELD BOOK: 246</p> <p>PLOT DATE: 6/17/09</p>	<p>CLIENT</p> <p>CDM</p>	<p>PROJECT</p> <p>KILLEARN ACRES DRAINAGE STUDY ALONG JOE COTTON TRAIL TALLAHASSEE, FLORIDA</p>	<p>SHEET TITLE</p> <p>TOPOGRAPHIC SURVEY</p>	<p>SEAL</p> <p>NOT VALID UNLESS EMBOSSED</p>	<p>SHEET NO.</p> <p>1 OF 3</p>
		<p>REVISIONS</p>					



DIVERSIFIED DESIGN AND DRAFTING SERVICES, INC.
 LB #6844
 2374 CAPITAL CIRCLE N.E.
 TALLAHASSEE, FLORIDA 32308
 PH: 850-385-1133
 FAX: 850-385-1236

DRAWN BY:	ELS
CHECKED BY:	JDH
DATE:	6/17/09
SCALE:	1"=20'
PROJECT NO:	256.000
DIGITAL FILE:	256_SHEET2-3
STATUS:	FINAL
FIELD BOOK:	246
PLOT DATE:	6/17/09

REVISIONS	

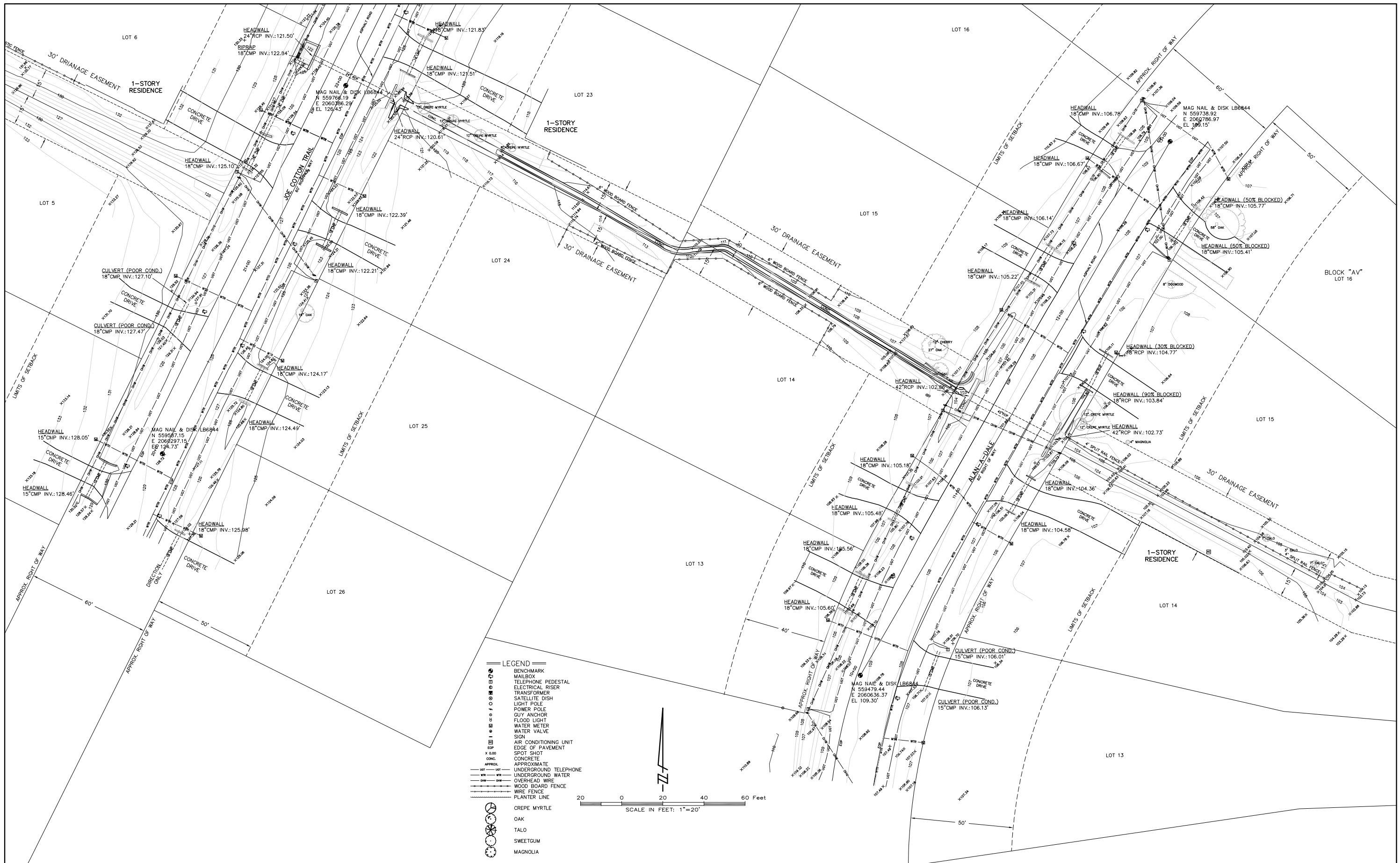
CLIENT
 CDM

PROJECT
 KILLEARN ACRES
 DRAINAGE STUDY ALONG
 JOE COTTON TRAIL
 TALLAHASSEE, FLORIDA

SHEET TITLE
 TOPOGRAPHIC SURVEY

SEAL
 NOT VALID UNLESS EMBOSSED

SHEET NO.
 2
 OF
 3



DIVERSIFIED DESIGN AND DRAFTING SERVICES, INC.
 LB #6844
 2374 CAPITAL CIRCLE N.E.
 TALLAHASSEE, FLORIDA 32308
 PH: 850-385-1133
 FAX: 850-385-1236

DRAWN BY:	ELS
CHECKED BY:	JDH
DATE:	6/17/09
SCALE:	1"=20
PROJECT NO:	256.000
DIGITAL FILE:	256_SHEET2-3
STATUS:	FINAL
FIELD BOOK:	246
PLOT DATE:	6/17/09

NO.	REVISIONS

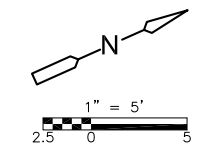
CLIENT
 CDM

PROJECT
 KILLEARN ACRES
 DRAINAGE STUDY ALONG
 JOE COTTON TRAIL
 TALLAHASSEE, FLORIDA

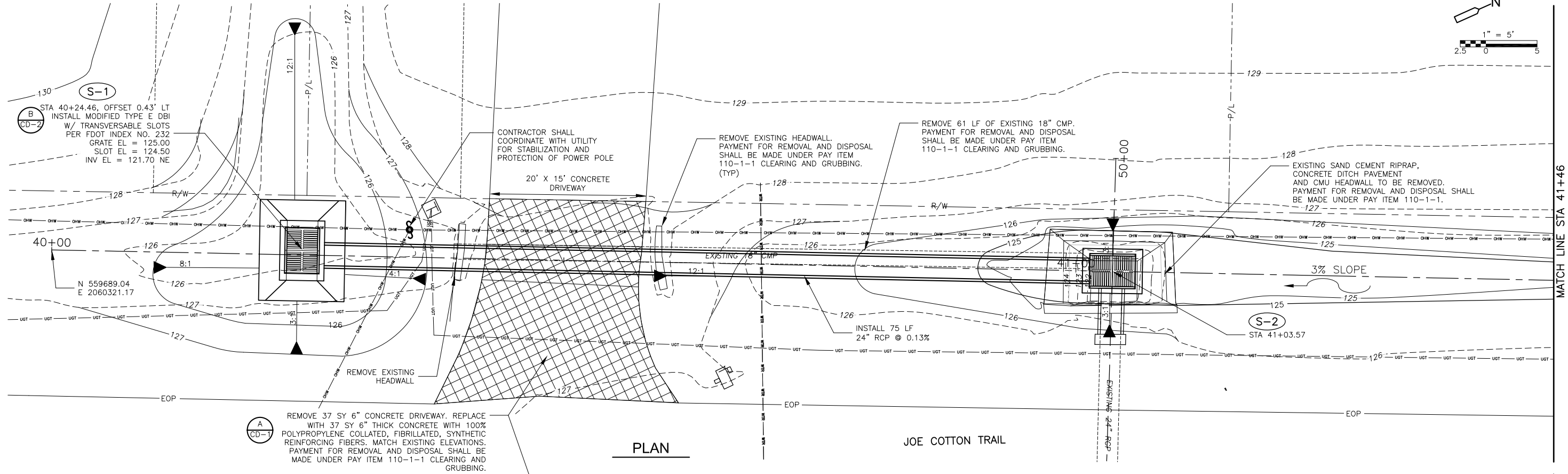
SHEET TITLE
 TOPOGRAPHIC SURVEY

SEAL
 NOT VALID UNLESS EMBOSSED

SHEET NO.
 3
 OF
 3



S-1
 STA 40+24.46, OFFSET 0.43' LT
 INSTALL MODIFIED TYPE E DBI
 W/ TRANSVERSABLE SLOTS
 PER FDOT INDEX NO. 232
 GRATE EL = 125.00
 SLOT EL = 124.50
 INV EL = 121.70 NE



A
 CD-1
 REMOVE 37 SY 6" CONCRETE DRIVEWAY. REPLACE WITH 37 SY 6" THICK CONCRETE WITH 100% POLYPROPYLENE COLLATED, FIBRILLATED, SYNTHETIC REINFORCING FIBERS. MATCH EXISTING ELEVATIONS. PAYMENT FOR REMOVAL AND DISPOSAL SHALL BE MADE UNDER PAY ITEM 110-1-1 CLEARING AND GRUBBING.

CONTRACTOR SHALL COORDINATE WITH UTILITY FOR STABILIZATION AND PROTECTION OF POWER POLE

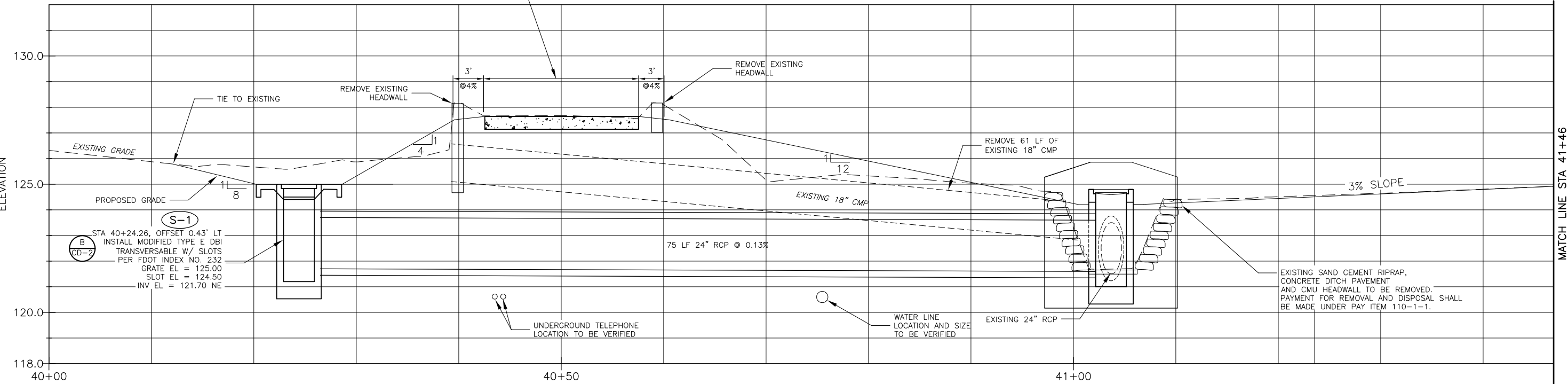
REMOVE EXISTING HEADWALL. PAYMENT FOR REMOVAL AND DISPOSAL SHALL BE MADE UNDER PAY ITEM 110-1-1 CLEARING AND GRUBBING. (TYP)

REMOVE 61 LF OF EXISTING 18" CMP. PAYMENT FOR REMOVAL AND DISPOSAL SHALL BE MADE UNDER PAY ITEM 110-1-1 CLEARING AND GRUBBING.

EXISTING SAND CEMENT RIPRAP, CONCRETE DITCH PAVEMENT AND CMU HEADWALL TO BE REMOVED. PAYMENT FOR REMOVAL AND DISPOSAL SHALL BE MADE UNDER PAY ITEM 110-1-1.

INSTALL 75 LF 24" RCP @ 0.13%

PLAN



S-1
 STA 40+24.26, OFFSET 0.43' LT
 INSTALL MODIFIED TYPE E DBI
 TRANSVERSABLE W/ SLOTS
 PER FDOT INDEX NO. 232
 GRATE EL = 125.00
 SLOT EL = 124.50
 INV EL = 121.70 NE

REMOVE EXISTING HEADWALL

REMOVE EXISTING HEADWALL

REMOVE 61 LF OF EXISTING 18" CMP

3% SLOPE

EXISTING SAND CEMENT RIPRAP, CONCRETE DITCH PAVEMENT AND CMU HEADWALL TO BE REMOVED. PAYMENT FOR REMOVAL AND DISPOSAL SHALL BE MADE UNDER PAY ITEM 110-1-1.

75 LF 24" RCP @ 0.13%

EXISTING 24" RCP

UNDERGROUND TELEPHONE LOCATION TO BE VERIFIED

WATER LINE LOCATION AND SIZE TO BE VERIFIED

PROFILE

PROFILE SCALE:
 HORIZ 1" = 5'
 VERT 1" = 2'

- NOTES:**
- ALL DISTURBED AREAS TO RECEIVE CENTIPEDE SOD.
 - CONTRACTOR SHALL PROTECT ROADWAY DURING CONSTRUCTION.

DESIGNED BY: K. BRELAND
 DRAWN BY: D. BUCKLAND
 SHEET CHK'D BY: B. WILLIAMS
 CROSS CHK'D BY: J. WITTIG
 APPROVED BY: B. WILLIAMS
 DATE: DECEMBER 2009

CDM
 Camp Dresser & McKee Inc.
 3522 Thomasville Road, Suite 300
 Tallahassee, FL 32309
 Tel: (850) 386-8500
 FL CCA No. EB-0000020
 consulting • engineering • construction • operations

LEON COUNTY
 FLORIDA
JOE COTTON TRAIL RETROFIT

PLAN AND PROFILE

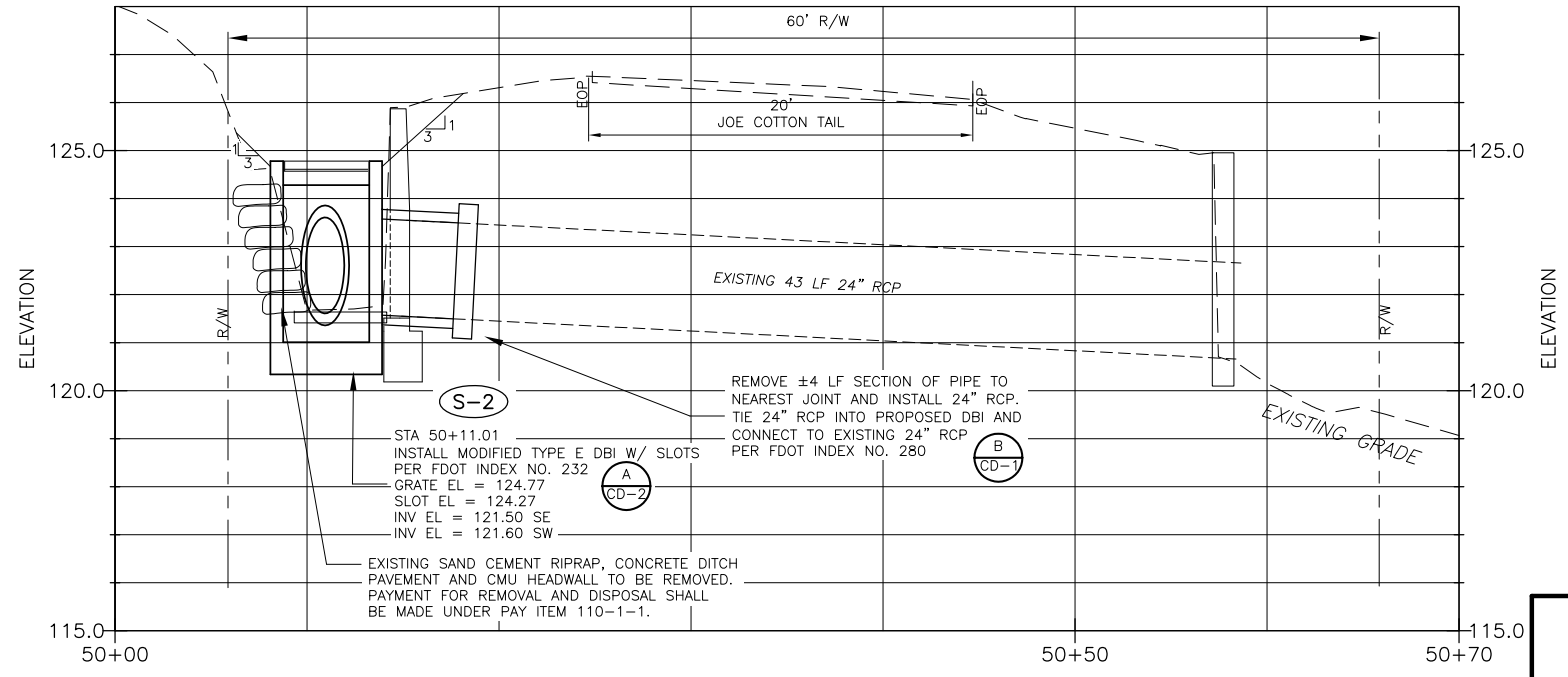
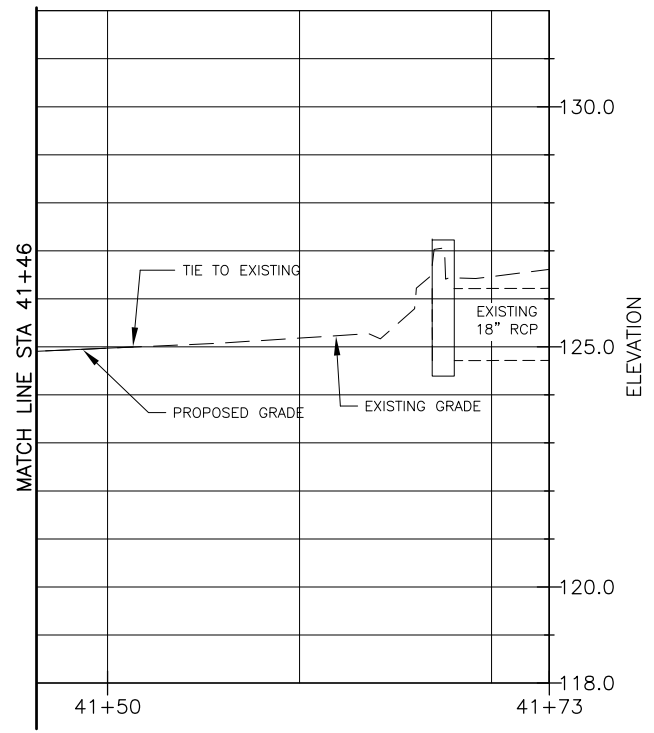
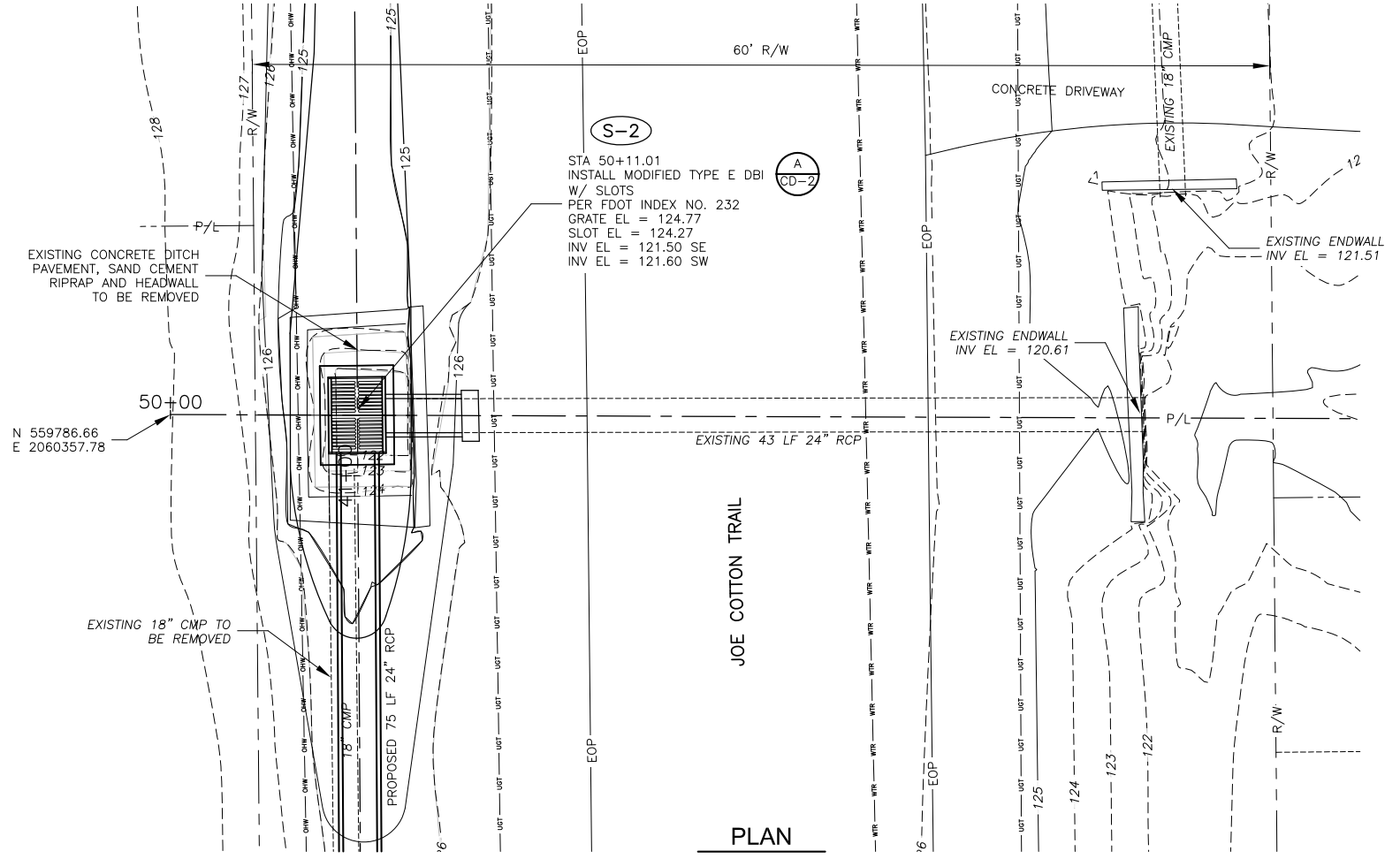
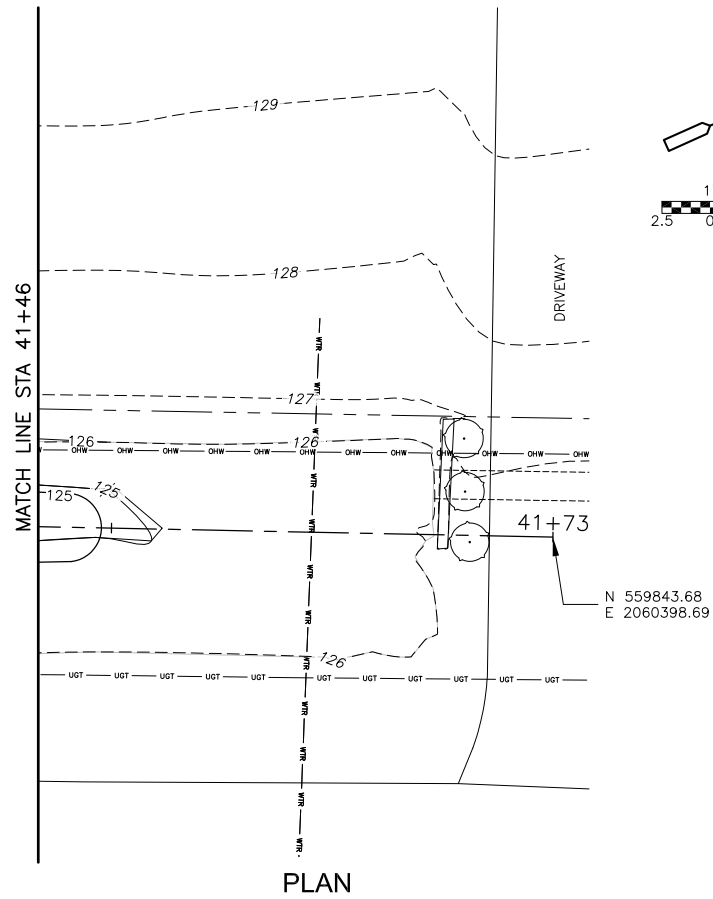
DATE:
 BRIAN K. WILLIAMS
 P.E. NO. 64086

PROJECT NO. 6021-71596
 FILE NAME: CO02PLPRFL

SHEET NO.
C-2

Xref's: [C22X34, C-SITE, CEBASE,] Images: []
 Filename: \\Orisvr1\WRDS\6021\71596\100P\Civil\CO02PLPRFL.dwg Last saved by: BUCKLANDDU Time: 12/17/2009 12:23:53 PM

REV. NO.	DATE	DRWN	CHKD	REMARKS



PROFILE SCALE:
 HORIZ 1" = 5'
 VERT 1" = 2'

- NOTES:**
1. ALL DISTURBED AREAS TO RECEIVE CENTIPEDE SOD.
 2. CONTRACTOR SHALL PROTECT ROADWAY DURING CONSTRUCTION.
 3. ALL GRADING SHALL BE PAID FOR UNDER PAY ITEM 430-17.

Xref's: [C22x34, C-SITE, CEBASE,] Images: []
 File name: \\Orisvr1\WRDS\6021\71596\100P\Civil\CO03PLPRFL.dwg Last saved by: BUCKLANDDU Time: 12/17/2009 12:20:46 PM

REV. NO.	DATE	DRWN	CHKD	REMARKS

DESIGNED BY: K. BRELAND
 DRAWN BY: D. BUCKLAND
 SHEET CHK'D BY: B. WILLIAMS
 CROSS CHK'D BY: J. WITTIG
 APPROVED BY: B. WILLIAMS
 DATE: DECEMBER 2009

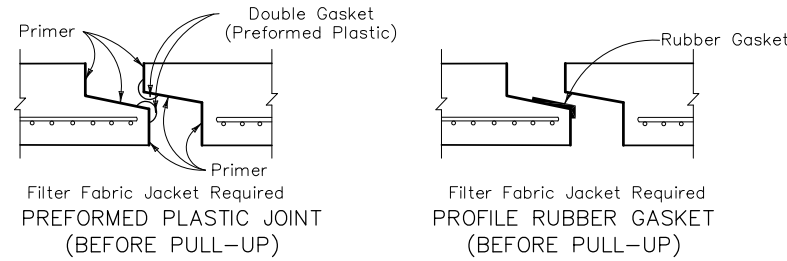
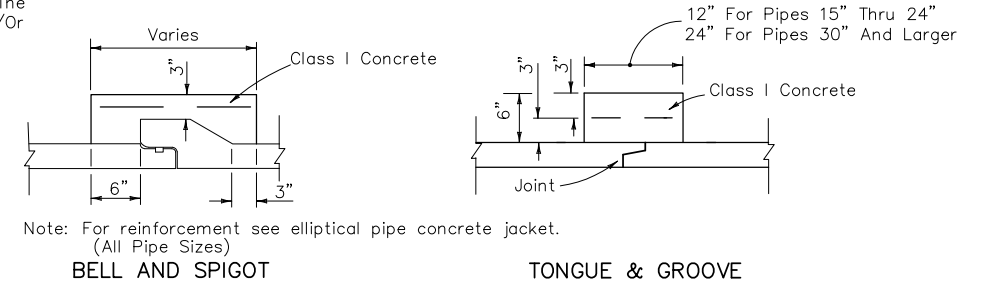
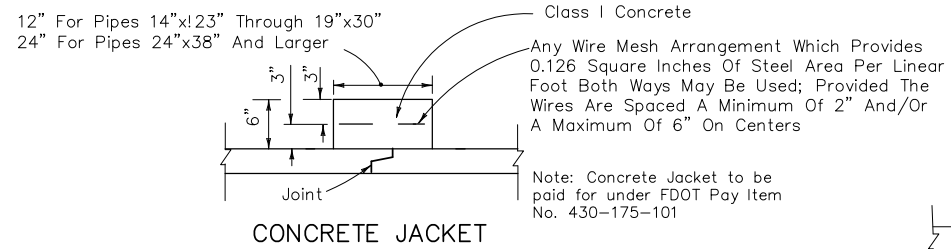
LEON COUNTY
 FLORIDA
JOE COTTON TRAIL RETROFIT

PLAN AND PROFILE
 SHEET NO.
C-3

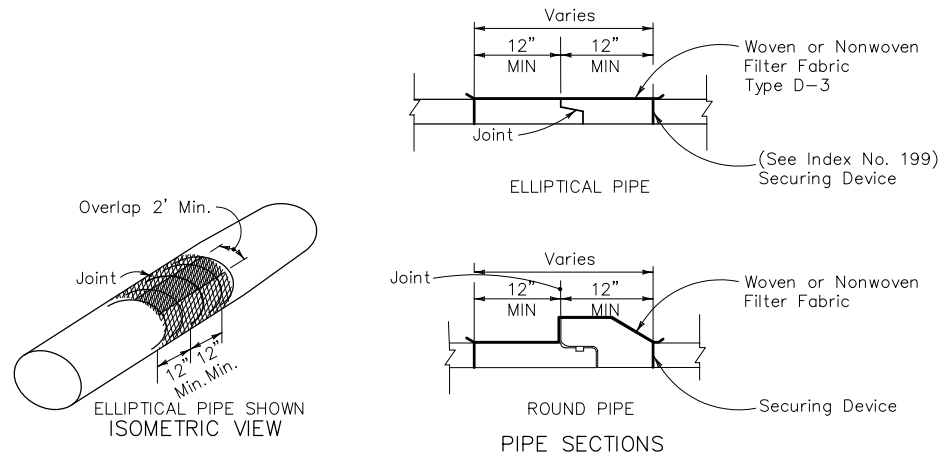
DATE:
 BRIAN K. WILLIAMS
 P.E. NO. 64086
 PROJECT NO. 6021-71596
 FILE NAME: CO03PLPRFL

GENERAL UTILITY CONFLICT RESOLUTION NOTES

- AT LOCATIONS WHERE WATER METERS ARE TO BE RELOCATED, THIS WORK SHALL INCLUDE RELOCATION OF THE METERS TO R/W LINE, RECONNECT TO CUSTOMERS PLUMBING AND RECONNECT ANY BACK FLOW DEVICES/PRESSURE REDUCING VALVES TO CUSTOMERS PLUMBING, UNLESS NOTED. ABANDONMENT AND REMOVAL OF THE EXISTING SERVICE LINES AT THESE LOCATIONS IS REQUIRED TO THE MAIN. WHERE THERE IS MORE THAN ONE METER AT A TAP, A NEW MANIFOLD WILL BE BUILT AND INSTALLED AS PER THE LATEST WATER DETAIL SHEET. IT SHALL BE THE CONTRACTOR'S RESPONSIBILITY PRIOR TO BIDDING TO FIELD INSPECT LOCATION AND NUMBER OF METERS AT A TAP. A 3/4" TAP CAN SERVE ONE OR TWO METERS. A 1" TAP CAN SERVE UP TO THREE METERS. A 1 1/2" TAP WILL SERVE FOUR METERS. A 2" TAP WILL BE USED FOR FIVE METERS UP TO A MAXIMUM OF TWELVE METERS.
- AS-BUILT DRAWINGS FOR NEW AND EXISTING WATER UTILITIES SHALL CONFORM TO CITY OF TALLAHASSEE WATER AND SEWER SPECIFICATIONS, INCLUDING 3 TIES (NEAREST FOOT AND INCH FROM CENTER OF VALVE BOX) TO EXISTING VALVE BOXES OR OTHER PERMANENT STRUCTURES.
- ABANDONED SERVICES TO BE PLUGGED AT MAIN (SEE TECHNICAL SPECIFICATIONS).
- THE LOCATION OF EXISTING METERS MAY NOT BE AT THE FUTURE PROJECT R/W LINE. AFTER THE NOTICE TO PROCEED IS ISSUED, THE MAINTENANCE OR REPAIR OF SERVICE LINES, MAINS, FIRE HYDRANTS, ETC. (DAMAGED DUE TO CONSTRUCTION ACTIVITY), IS THE RESPONSIBILITY OF THE CONTRACTOR UNTIL ACCEPTANCE OF THE PROJECT BY THE CITY OF TALLAHASSEE. INSTALLATION OF STORM DRAIN OR ROADWAY WORK DOES NOT TAKE AWAY THE RESPONSIBILITY FOR THE CONTRACTOR TO MAINTAIN WATER SERVICE.
- ABANDONED IN PLACE WATER MAIN, HYDRANTS, SERVICES, ETC. SHALL BE REMOVED AS PART OF CLEARING AND GRUBBING. REFER TO F.D.O.T. STANDARD SPECIFICATIONS FOR ROAD AND BRIDGE CONSTRUCTION, SECTION 110-2, AND PARAGRAPH 110-2.1.
- UNLESS NOTED ON PLANS, SERVICE LINES SHOULD BE 3/4" TYPE-K COPPER. IF THE SIZE OF THE SERVICE LINE IS DIFFERENT FROM WHAT THE PLANS INDICATE, THE CONTRACTOR SHALL REPLACE/INSTALL WITH THE SAME SIZE AS THE EXISTING LINE AND THE COST IS TO BE THE UNIT COST OF THAT SIZE BID ITEM. IN A CASE WHERE THE EXISTING SERVICE LINE IS TOO SMALL (EXAMPLE-3/4" LINE SERVING 5 METERS) SIZE OF NEW SERVICE LINE SHALL CONFORM WITH THE CITY OF TALLAHASSEE WATER DETAIL SHEET. THE SAME APPLIES TO A LARGER TAP THAN NEEDED.
- IT SHALL BE THE CONTRACTOR'S RESPONSIBILITY TO LOCATE AND RAISE ALL EXISTING VALVE BOXES NEEDED TO ISOLATE THE CONSTRUCTION AREA PRIOR TO MAIN CONSTRUCTION/RELOCATION/ADJUSTMENT OR ROADWAY CONSTRUCTION. SOME VALVES MAY BE LOCATED DOWN SIDE STREETS. LINE ITEMS WILL BE ESTABLISHED FOR VALVE BOX ADJUSTMENTS AND FOR FINISH VALVE BOX RAISING. FOR NEW WATER MAIN CONSTRUCTION (EVEN IN EXISTING STREETS), NO LINE ITEM WILL BE ESTABLISHED, RAISING TO BE INCLUDED IN PIPE PRICES.
- FITTINGS AND REACTION BLOCKING ARE TO BE INCLUDED IN PIPE PRICES.
- AT LOCATIONS WHERE ASBESTOS CEMENT (AC) PIPE IS TO BE REPLACED, CLASS 350 RESTRAINED JOINT DUCTILE IRON PIPE IS TO BE USED. THIS NEW PIPE IS TO BE INSTALLED BY REMOVING THE AC PIPE TO THE NEAREST MACHINED END, AND ATTACHING DIRECTLY TO THE EXISTING PIPE WITH THE APPROPRIATE FITTING.
- WHERE PIPE HANGARS ARE REQUIRED, THE CONTRACTOR SHALL SUBMIT A RECOMMENDATION TO THE ENGINEER FOR APPROVAL PRIOR TO INSTALLATION.



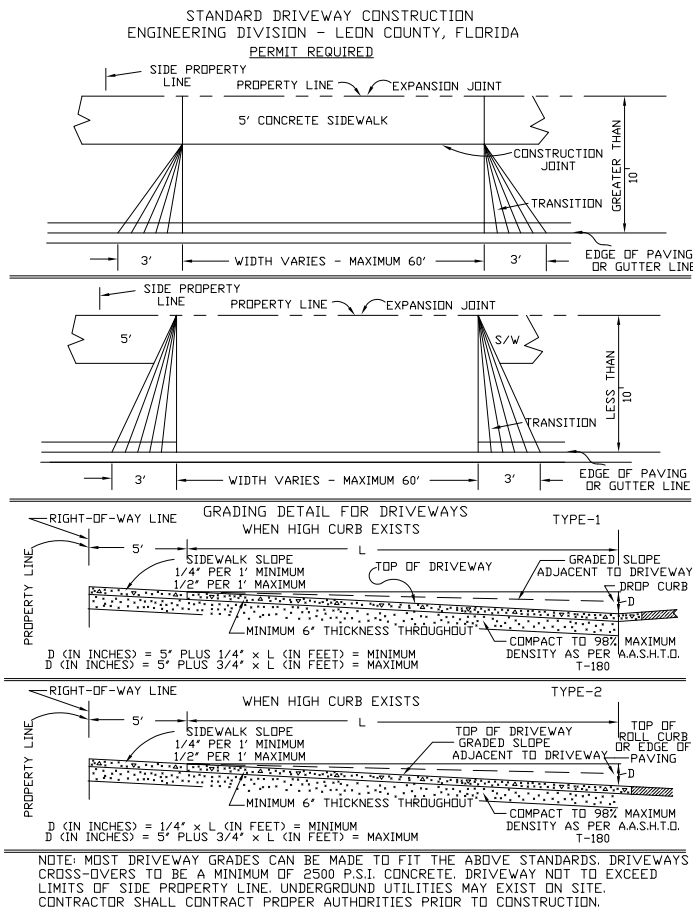
ELLIPTICAL CONCRETE PIPE JOINTS



Cost of filter fabric jacket to be included in cost of pipe culverts.
**FOR ALL PIPE - CONCRETE PIPE SHOWN
 FILTER FABRIC JACKET**

FDOT INDEX 280

DETAIL **(B)**
 NTS C-2



DRIVEWAY DETAIL

DETAIL **(A)**
 NTS C-2

NOTE:
 6" THICK CONCRETE DRIVEWAY WITH 100% POLYPROPYLENE COLLATED, FIBRILLATED, SYNTHETIC REINFORCING FIBERS, WITH BROOM SWEEP FINISH (PAYMENT SHALL BE MADE UNDER PAY ITEM NO. 522-2 SIDEWALK CONCRETE, 6" THICK FIBERMESH CONCRETE).

Xref's: [C22x34, MAP, ...] Images: []
 File name: \\Orisv1\WRDS\6021\71596\90P\Civil\DETAILS\CD01MISDET.dwg Last saved by: BUCKLANDU Time: 11/5/2009 3:45:49 PM

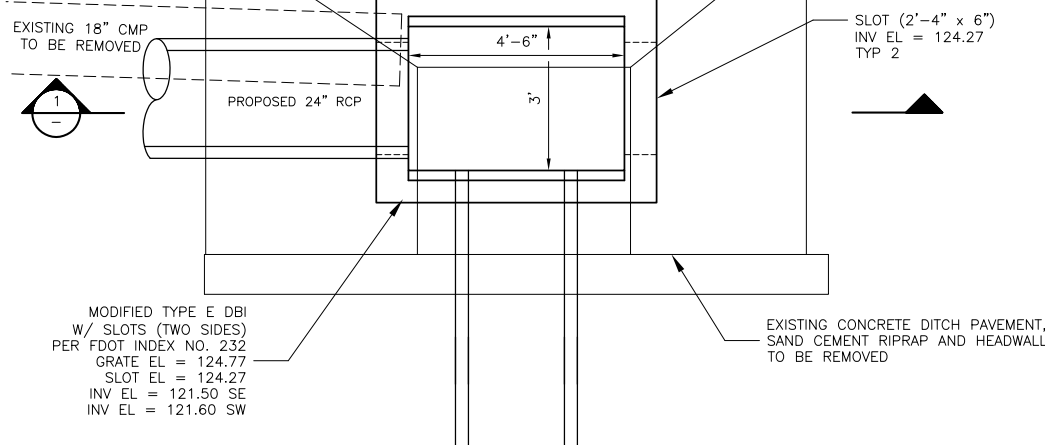
REV. NO.	DATE	DRWN	CHKD	REMARKS

DESIGNED BY: <u>K. BRELAND</u>	<p>Camp Dresser & McKee Inc. 3522 Thomasville Road, Suite 300 Tallahassee, FL 32309 Tel: (850) 388-9600 FL CCA No. EB-0000020 consulting • engineering • construction • operations</p>
DRAWN BY: <u>D. BUCKLAND</u>	
SHEET CHK'D BY: <u>B. WILLIAMS</u>	
CROSS CHK'D BY: <u>J. WITTIG</u>	
APPROVED BY: <u>B. WILLIAMS</u>	
DATE: <u>DECEMBER 2009</u>	

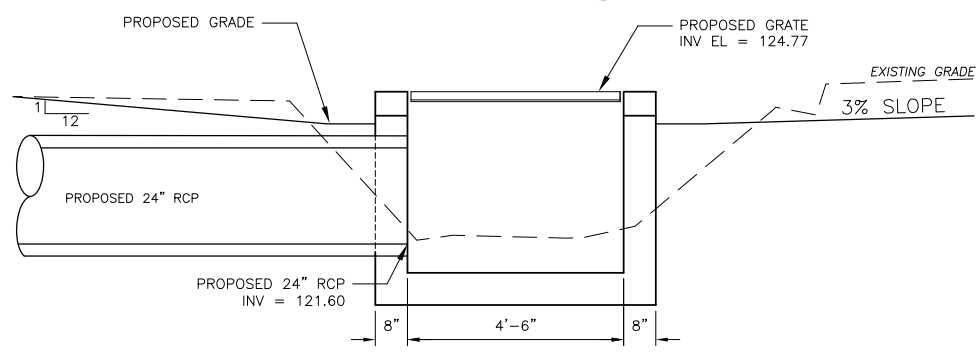
LEON COUNTY FLORIDA
JOE COTTON TRAIL RETROFIT

MISCELLANEOUS DETAILS
SHEET NO. CD-1

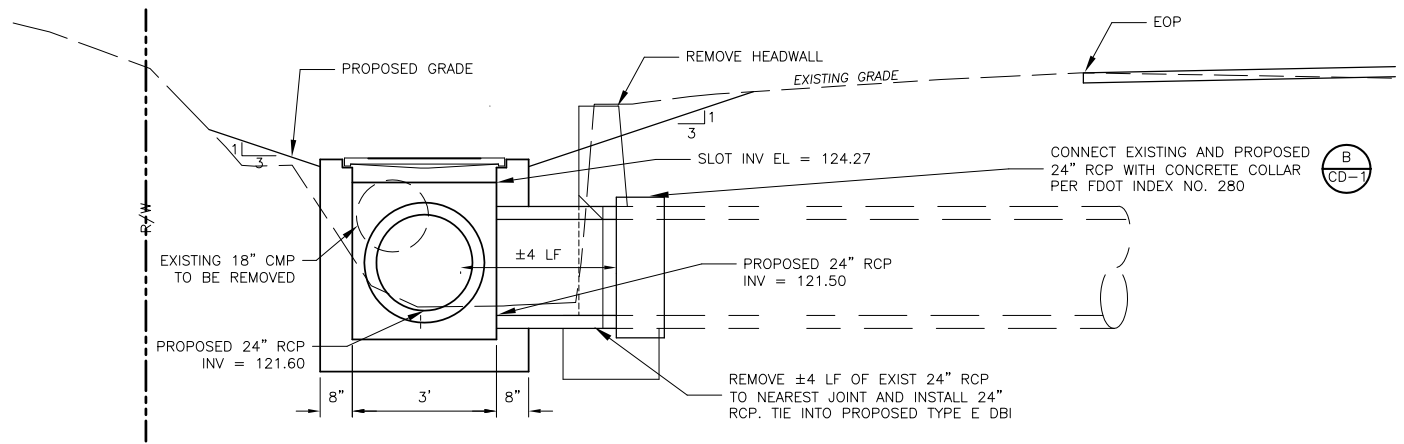
DATE: BRIAN K. WILLIAMS P.E. NO. 64086
PROJECT NO. 6021-71596 FILE NAME: CD01MISDET



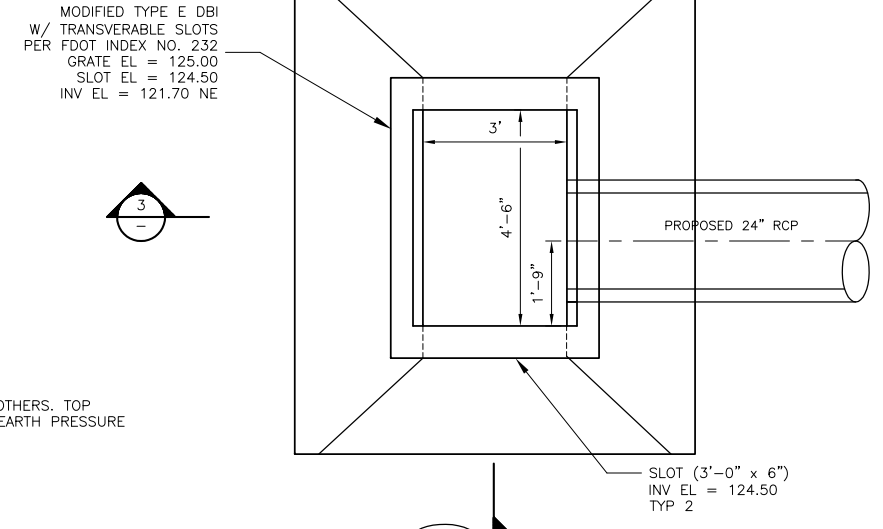
MODIFIED TYPE E DBI W/ SLOTS
DETAIL A
 1" = 2'



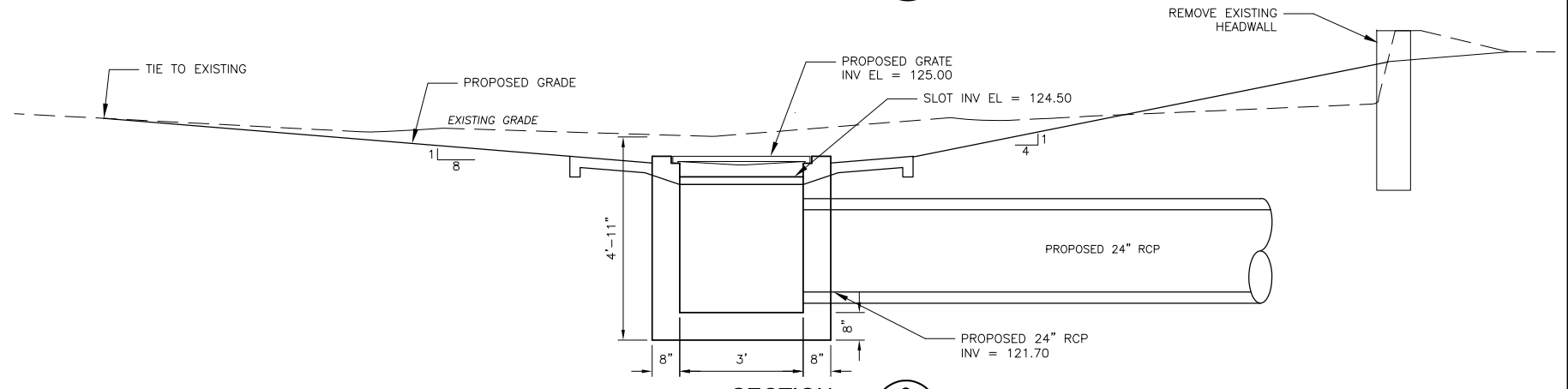
SECTION 1
 1" = 2'



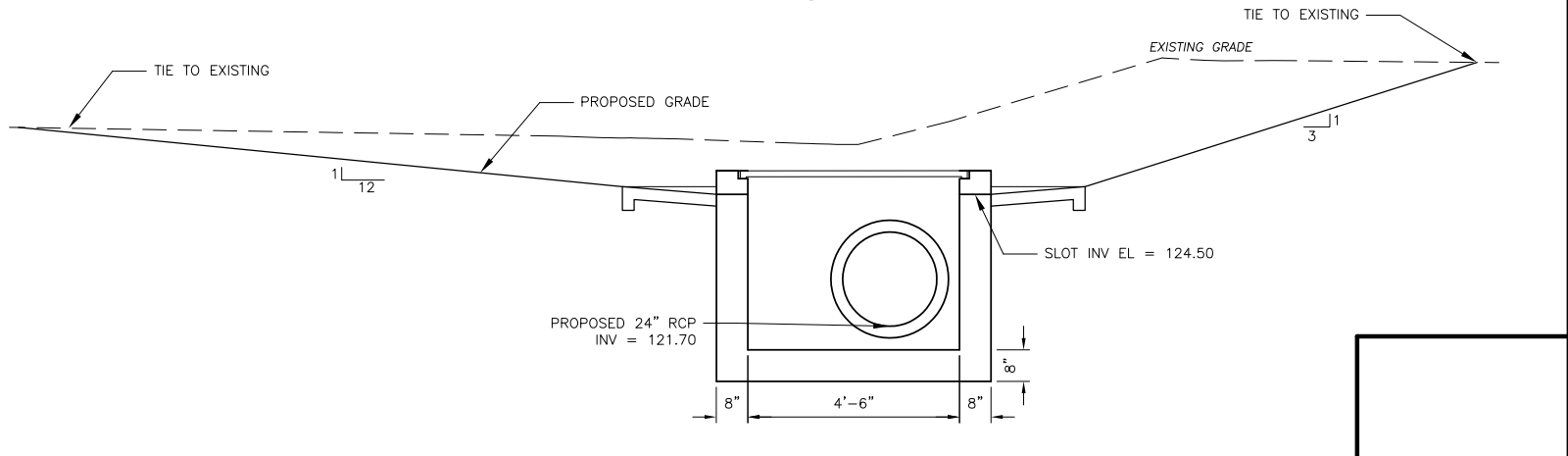
SECTION 2
 1" = 2'



MODIFIED TYPE E DBI W/ TRANSVERSABLE SLOTS
DETAIL B
 1" = 2'



SECTION 3
 1" = 2'



SECTION 4
 1" = 2'

NOTES:
 1. PRECAST CONCRETE DBI'S TO BE DESIGNED BY OTHERS. TOP LOADING SHALL BE H-20, EQUIVALENT LATERAL EARTH PRESSURE SHALL BE 90 LB/FT².

Xref's: [C22X34, MAP, ...] Images: [...]
 File name: \\Orisvr1\WRDS\6021\71596\100P\Civil\DETAILS\CD02MISDET.dwg
 Last saved by: BUCKLANDJU Time: 12/16/2009 12:33:00 PM

REV. NO.	DATE	DRWN	CHKD	REMARKS

DESIGNED BY: K. BRELAND
 DRAWN BY: D. BUCKLAND
 SHEET CHK'D BY: B. WILLIAMS
 CROSS CHK'D BY: J. WITTIG
 APPROVED BY: B. WILLIAMS
 DATE: DECEMBER 2009

CDM
 Camp Dresser & McKee Inc.
 3522 Thomasville Road, Suite 300
 Tallahassee, FL 32309
 Tel: (850) 398-9600
 FL CCA No. EB-0000020
 consulting • engineering • construction • operations

LEON COUNTY
 FLORIDA
JOE COTTON TRAIL RETROFIT

MISCELLANEOUS DETAILS

DATE: BRIAN K. WILLIAMS
 P.E. NO. 64086
 PROJECT NO. 6021-71596
 FILE NAME: CD02MISDET
 SHEET NO. **CD-2**

ISSUED FOR BID